

Product Specifications



USHIBAY100WNTL

FEATURES

- Linear Design
- System Light Efficacy >100 LPW
- Easy Installation & Maintenance
- IP65/ IP30(PIR)
- Five Years Warranty
- ETL, DLC, CE, RoHS, CB, WEEE

TYPICAL APPLICATIONS

- Warehouse/Manufacturing Facilities
- Convention Centers/Sporting Arenas
- Big-Box Retail Stores
- Cold Storage Facilities
- Gymnasiums

SPECIFICATIONS

PERFORMANCE

| | |
|--------------------|---|
| LED Chip | OSRAM |
| Lumen Output (IES) | 10,000 lm |
| Power Consumption | 100 W |
| Efficacy (IES) | >100 lm/W |
| Beam Angle | 70/135°, 30/100°, 90°,110°,150°, 60/100° |
| Color Temperature | 4500~5500K (2500~5500K Optional) |
| CRI | ≥80 |
| Lumen Maintenance | L70>70,000 hours (Calculated Using TM-21 Calculator) |
| Input Voltage | 100-277 VAC (347/480 VAC Optional) Dimming Optional |
| Power Factor | 0.95 minimum |

ENVIRONMENTAL

| | |
|-----------------------|----------------------------|
| IP Rating | IP65/ IP30(PIR) |
| Operating Temperature | -30 to 45°C (-22 to 113°F) |
| Storing Temperature | -40 to 80°C (-40 to 167°F) |
| Humidity | 15% to 95% RH |

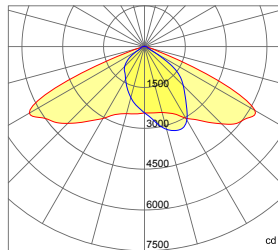
PHYSICAL

| | |
|--------------------|---|
| Dimensions (L×W×H) | 650×159×114 mm (25.6×6.3×4.5 in) (Steel Cable) |
| Weight | 4.3 kg (9.5 lbs) (Steel Cable) |
| Mounting Options | Steel Cable, Surface Mount |
| Fixture Material | Aluminum Alloy |

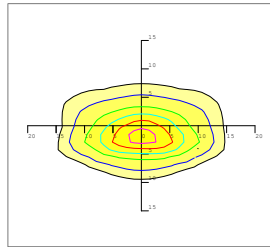
WARRANTY

5 Years

70×135 DEGREE LENS (Forward 5°)



— 0.0~180.0
— 90.0~270.0



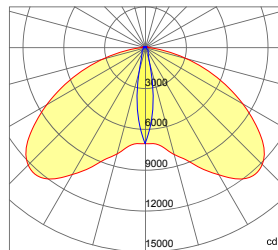
Mounting Height 7m, 0 Tilt,
50LUX-5LUX

Illumination-70/135 Degree Beaming Angle

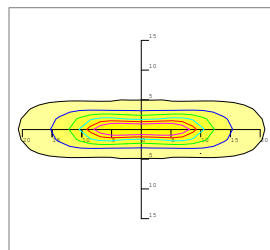
| Height | Rectangular Light Spot | LUX |
|--------|------------------------|-------|
| 5m | 9×24m | 90LUX |
| 6m | 11×29m | 66LUX |
| 7m | 13×34m | 50LUX |
| 8m | 14×39m | 39LUX |
| 9m | 15×43m | 31LUX |

| | |
|-----------------------|-------------|
| Beam Angle (50% max) | 70×135 DEG |
| Field Angle (10%) | 100×160 DEG |
| Luminous Flux (IES) | 10,000 lm |
| Light Efficacy (IES) | 100 lm/W |
| Cutoff Classification | Cutoff |

30×100 DEGREE LENS



— 0.0~180.0
— 90.0~270.0



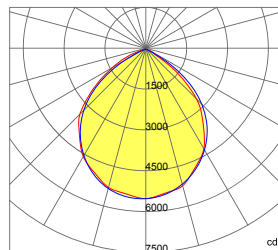
Mounting Height 10m, 0 Tilt,
50LUX-5LUX

Illumination-30/100 Degree Beaming Angle

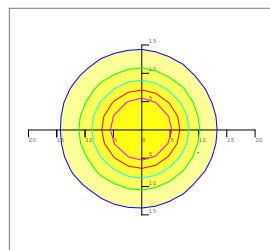
| Height | Rectangular Light Spot | LUX |
|--------|------------------------|--------|
| 6m | 3×11m | 231LUX |
| 7m | 3×13m | 170LUX |
| 8m | 4×15m | 131LUX |
| 9m | 4×17m | 104LUX |
| 10m | 4×19m | 84LUX |

| | |
|-----------------------|-------------|
| Beam Angle (50% max) | 30×100 DEG |
| Field Angle (10%) | 50×120 DEG |
| Luminous Flux (IES) | 10,000 lm |
| Light Efficacy (IES) | >100 lm/W |
| UGR | 13/39 |
| Cutoff Classification | Semi-Cutoff |

90 DEGREE LENS



— 0.0~180.0
— 90.0~270.0



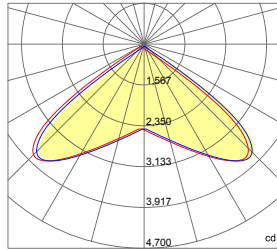
Mounting Height 12m, 0 Tilt,
50LUX-5LUX

Illumination-90 Degree Beaming Angle

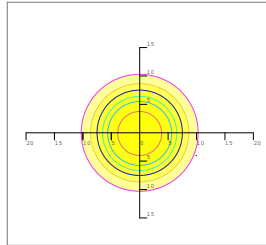
| Height | Beam Diameter | LUX |
|--------|---------------|--------|
| 5m | φ 14m | 132LUX |
| 6m | φ 16m | 99LUX |
| 7m | φ 19m | 76LUX |
| 8m | φ 23m | 58LUX |
| 9m | φ 24m | 46LUX |

| | |
|-----------------------|-----------|
| Beam Angle (50% max) | 90 DEG |
| Field Angle (10%) | 130 DEG |
| Luminous Flux (IES) | 10,000 lm |
| Light Efficacy (IES) | 100 lm/W |
| UGR | 25 |
| Cutoff Classification | Cutoff |

110 DEGREE LENS



— 0.0~180.0
— 90.0~270.0

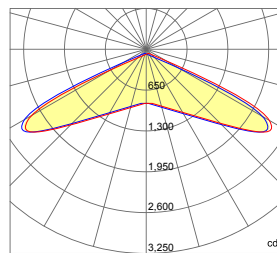


Mounting Height 10m, 0 Tilt,
50LUX-5LUX

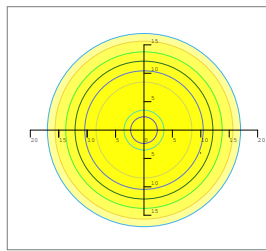
| Illumination-110 Degree Beaming Angle | | |
|---------------------------------------|------------------------|--------|
| Height | Rectangular Light Spot | LUX |
| 2m | 4.0x4.3m | 595LUX |
| 4m | 8.0x8.6m | 149LUX |
| 6m | 12.0x13.0m | 66LUX |
| 8m | 15.9x17.3m | 37LUX |
| 10m | 19.9x21.6m | 24LUX |

| | |
|-----------------------|-----------|
| Beam Angle (50% max) | 110 DEG |
| Luminous Flux (IES) | 10,000 lm |
| Light Efficacy (IES) | 100 lm/W |
| Cutoff Classification | Cutoff |

150 DEGREE LENS



— 0.0~180.0
— 90.0~270.0

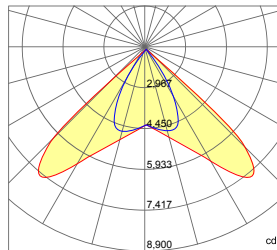


Mounting Height 10m, 0 Tilt,
50LUX-5LUX

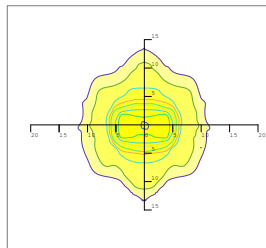
| Illumination-150 Degree Beaming Angle | | |
|---------------------------------------|------------------------|--------|
| Height | Rectangular Light Spot | LUX |
| 2m | 1.8x5.3m | 303LUX |
| 4m | 3.7x10.7m | 76LUX |
| 6m | 5.5x16.0m | 34LUX |
| 8m | 7.4x21.4m | 19LUX |
| 10m | 9.2x26.7m | 12LUX |

| | |
|-----------------------|-----------|
| Beam Angle (50% max) | 150 DEG |
| Luminous Flux (IES) | 10,000 lm |
| Light Efficacy (IES) | 100 lm/W |
| Cutoff Classification | Cutoff |

60 x 100 DEGREE LENS



— 0.0~180.0
— 90.0~270.0



Mounting Height 10m, 0 Tilt,
50LUX-5LUX

| Illumination-60x100 Degree Beaming Angle | | |
|--|------------------------|--------|
| Height | Rectangular Light Spot | LUX |
| 2m | 1.5x2.2m | 986LUX |
| 4m | 2.9x4.4m | 246LUX |
| 6m | 4.4x6.6m | 110LUX |
| 8m | 5.8x8.7m | 62LUX |
| 10m | 7.3x10.9m | 40LUX |

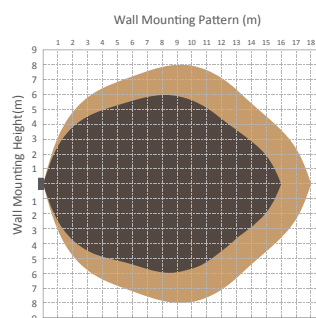
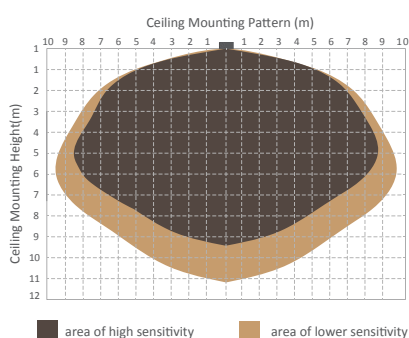
| | |
|-----------------------|------------|
| Beam Angle (50% max) | 60x100 DEG |
| Luminous Flux (IES) | 10,000 lm |
| Light Efficacy (IES) | 100 lm/W |
| Cutoff Classification | Cutoff |

Microwave Sensor & Dimmer Option



| Technical Data | | | |
|-----------------------|---|---------------------|----------------------|
| Operating voltage | 120-277V | Standby power | approx. 0.5W |
| Switched power | Max.capacitive load: 800W @277V, 400W@120V | Heating time | 20s |
| Detection area | 10/50/75/100%, can be customized | Sensor principle | Microwave motion |
| Hold time | 5S/30S/1min/5min/10min/20min/30min, can be customized | Microwave frequency | 5.8GHz+/-75MHz |
| Standby period | 0s/10s/1min/5min/10min/30min/1h/+∞can be customized | Microwave power | <0.2mw |
| Standby dimming level | 10%/20%/30%/50% can be customized | Detection range | Max. (φxH):18m x 10m |
| Daylight threshold | 2~50lux daylight/twilight/darkness, can be customized | Detection angle | 30° ~ 150° |
| Operating temperature | -35℃ ~ +70℃ | Mounting height | Max.10m |
| IP rating | IP20, IP65(mounting in Hytronik special box) | Certificate | ETL, FCC |

Detection Pattern

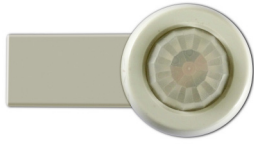


Setting

| | Detection Area | | | Hold-time | | | | Daylight Sensor | | | Stand-by Period (Corridor function) | | | | Stand-by Dimming Level | | |
|------|----------------|---|------|-----------|---|---|-------|-----------------|---|---------|--|---|---|-------|---------------------------|---|-----|
| | 1 | 2 | | 1 | 2 | 3 | | 1 | 2 | | 1 | 2 | 3 | | 1 | 2 | |
| I | ● | ● | 100% | ● | ● | ● | 5s | ● | ● | Disable | ● | ● | ● | 0s | ● | ● | 10% |
| II | ● | ○ | 75% | ● | ● | ○ | 30s | ● | ○ | 50lux | ● | ● | ○ | 10s | ● | ○ | 20% |
| III | ○ | ● | 50% | ● | ○ | ● | 1min | ○ | ● | 10lux | ● | ○ | ● | 1min | ○ | ● | 30% |
| IV | ○ | ○ | 10% | ● | ○ | ○ | 5min | ○ | ○ | 2lux | ● | ○ | ● | 5min | ○ | ○ | 50% |
| V | | | | ○ | ● | ● | 10min | | | | ○ | ● | ● | 10min | | | |
| VI | | | | ○ | ● | ○ | 20min | | | | ○ | ● | ○ | 30min | | | |
| VII | | | | ○ | ○ | ○ | 30min | | | | ○ | ○ | ● | 1h | | | |
| VIII | | | | | | | | | | | ○ | ○ | ○ | +∞ | | | |

- 1 Detection area can be reduced by selecting the combination on the DIP switches to fit precisely for each specific application.
- 2 Hold-time means the time period you would like to keep the lamp on 100% after the person has left the detection area.
- 3 The daylight threshold can be set on DIP switches, to fit for particular application.
- 4 This is the time period you would like to keep at the low light output level before it is completely switched off in the long absence of people. Note: 0 means on/off control; $+\infty$ means 2 steps of dimming control, fixture never switch off.
- 5 This is the dimmed low light output level you would like to have after the hold-time in the absence of people.

Infrared Sensor & Dimmer Option



Technical Data

| | |
|---|--|
| <ul style="list-style-type: none"> 120/277 VAC, 50/60Hz - Load @120 VAC 0-800W Ballast or Incandescent - Load @277 VAC 0-1200W Ballast | <ul style="list-style-type: none"> Sensitivity: None, Low, Med, Max; Default Max Setpoint: None, 1-250 fc, Auto; Default 4 fc Ramp up time: None, 1-60 sec.; Default None |
| <ul style="list-style-type: none"> 230 VAC, 50Hz; Load 0-300W Ballast | <ul style="list-style-type: none"> Fade Down Time: None, 1-60 sec.; Default None |
| <ul style="list-style-type: none"> Relay Life Rating: 200,000 Cycles (120/277 VAC); 50,000 Cycles (230 VAC) | <ul style="list-style-type: none"> Operating Temperature: -40-167°F (-40-75°C) Operating Humidity: 20-90% |
| <ul style="list-style-type: none"> High Mode: 0-10 V; Default 10 V Low Mode: Off, 0-9.8 V; Default 1 V Time Delay: 30 Sec., 5-30 min.; Default 5 min. Cut Off Delay: None, 1-60 min. 1-5 hrs.; Default 1hr. | <ul style="list-style-type: none"> Weight: 2.8 oz (80 grams) IP66, CE Compliant TUV, UL and cUL Listed Five Year Warranty |

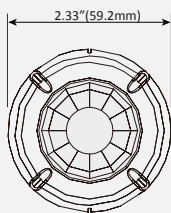
Coverage Pattern

Density and range of the coverage pattern are determined by the type of lens and mounting height

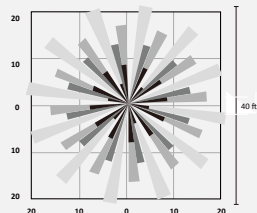
L3: 360° Coverage

L3 has a high density lens that covers a 40' diameter area at a height of 20'.

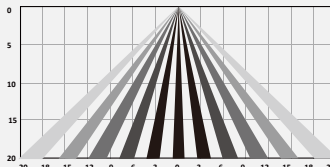
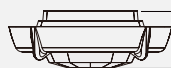
FSP-L3 High Density/Reduced Range Lens



Coverage Top View



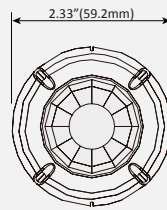
Coverage Side View



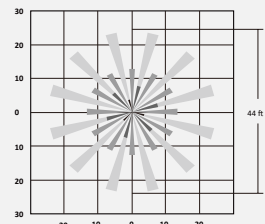
L2: 360° Coverage

L2 lens provides a 44' diameter coverage area when mounted at a height of 8'.

L2 Low Density/Wide Range Lens



Coverage Top View



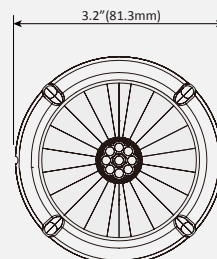
Coverage Side View



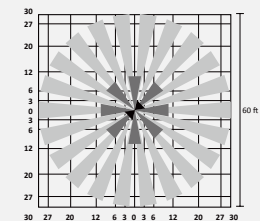
L4: 360° Coverage

L4 is designed for mounting at heights between 30' to 40'. Its coverage area can be up to 60' in diameter when mounted at 40'.

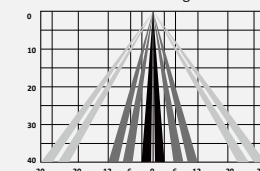
L4 40 Foot High Bay Lens



Coverage Top View



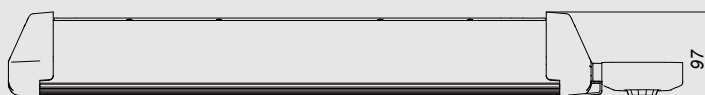
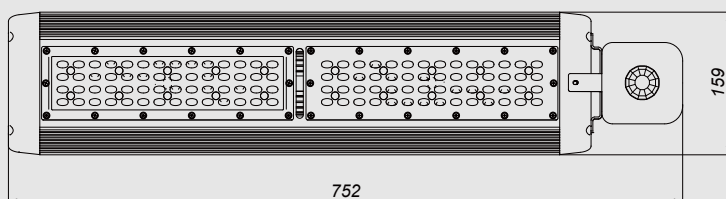
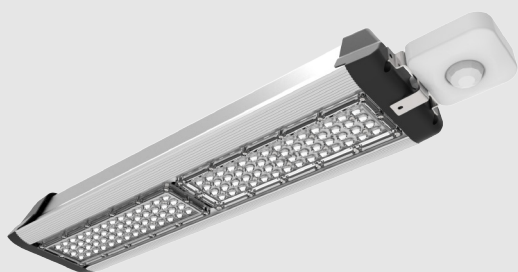
Coverage Side View



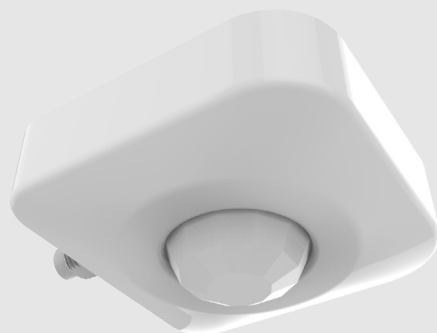
Setting

Refer to Dimmer&Remotion operation guidance.

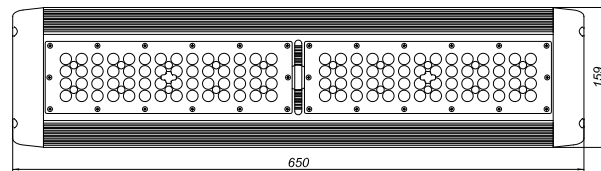
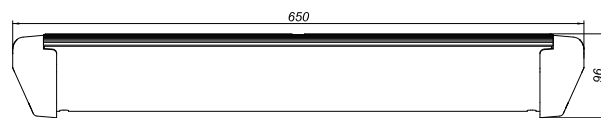
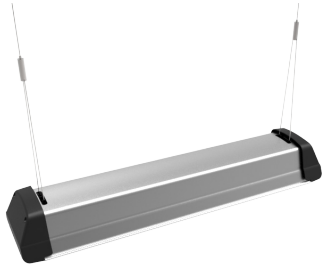
PIR Sensor Option



| | |
|-----------------------|---|
| Input Voltage | AC 120-277 V, 60HZ |
| Load Requirement | 800VA @ 120V AC Fluorescent Ballasts NO Min 1200VA @ 277V AC Fluorescent Ballasts NO Min |
| Load Horsepower | 1/6HP |
| Time Delay Adjustment | Fixed 15 seconds to 30 minutes |
| Operating Temperature | 32° to 131° F (0° to 55° C) |
| Humidity range | 0%-90%RH, non-condensing |
| Coverage range | Up to 30 ft mounting / 360 Degrees |
| Terminal Line | Black-Hot, White-Neutral, Red-Load |
| Warranty | 2 Years |
| IP Rating | IP 30 |
| Sensor Type | IR Sensor |



Steel Cable



Surface Mount Bracket

