



# Product Specifications



## USHIBAY150WEGEL

### FEATURES

- System Light Efficacy 120 LPW
- Flexible, Modular Design
- Easy Installation & Maintenance
- IP66
- Five Years Warranty
- ETL, CE, RoHS, CB, WEEE

### TYPICAL APPLICATIONS

- Warehouse/Manufacturing Facilities
- Convention Centers/Sporting Arenas
- Big-Box Retail Stores
- Cold Storage Facilities
- Gymnasiums

### SPECIFICATIONS

#### PERFORMANCE

LED Chip	OSRAM
Lumen Output (IES)	18,000 lm
Power Consumption	150 W
Efficacy (IES)	120 lm/W
Beam Angle	70/135°, 30/100°, 90°, 110°, 150°, 60/100°
Color Temperature	4500~5500K (2500~5500K Optional)
CRI	≥70
Lumen Maintenance	L70>100,000 hours (Calculated Using TM-21 Calculator)
Input Voltage	100-277 VAC (347/480 VAC Optional) Dimming Optional
Power Factor	0.95 minimum

#### ENVIRONMENTAL

IP Rating	IP66
Operating Temperature	-30 to 45°C (-22 to 113°F)
Storing Temperature	-40 to 80°C (-40 to 167°F)
Humidity	15% to 95% RH

#### PHYSICAL

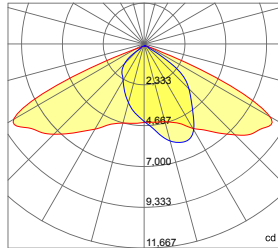
Dimensions (L×W×H)	435×365×224 mm (17.1×14.4×8.8 in) (U Bracket)
Weight	7.7 kg (17.0 lbs) (U Bracket)
Mounting Options	Hook/Chain Mount, Surface Mount Universal Hanging Bracket
Fixture Material	Aluminum Alloy

#### WARRANTY

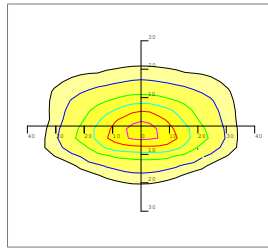
5 Years



### 70×135 DEGREE LENS (Forward 5°)



— 0.0~180.0  
— 90.0~270.0



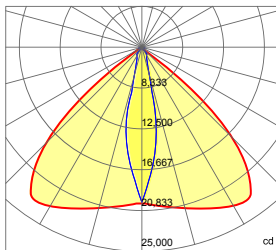
Mounting Height 10m, 0 Tilt,  
20LUX-0.2LUX

#### Illumination-70/135 Degree Beaming Angle

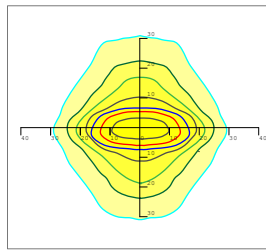
Height	Rectangular Light Spot	LUX
2m	1.8×2.1m	1073LUX
4m	3.6×4.2m	268LUX
6m	5.4×6.3m	119LUX
8m	7.2×8.3m	67LUX
10m	9.0×10.4m	43LUX

Beam Angle (50% max)	70×135 DEG
Luminous Flux (IES)	18,000 lm
Light Efficacy (IES)	120 lm/W
Cutoff Classification	Cutoff

### 30×100 DEGREE LENS



— 0.0~180.0  
— 90.0~270.0



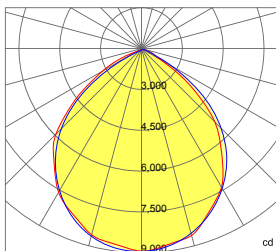
Mounting Height 10m, 0 Tilt,  
20LUX-0.2LUX

#### Illumination-30/100 Degree Beaming Angle

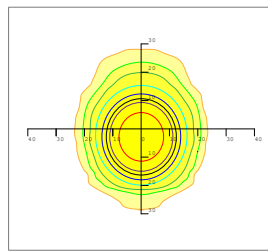
Height	Rectangular Light Spot	LUX
2m	0.9×4.5m	5178LUX
4m	1.9×8.9m	1294LUX
6m	2.8×13.4m	575LUX
8m	3.7×17.9m	324LUX
10m	4.7×22.3m	207LUX

Beam Angle (50% max)	30×100 DEG
Luminous Flux (IES)	18,000 lm
Light Efficacy (IES)	120 lm/W
Cutoff Classification	Cutoff

### 90 DEGREE LENS



— 0.0~180.0  
— 90.0~270.0



Mounting Height 10m, 0 Tilt,  
20LUX-0.2LUX

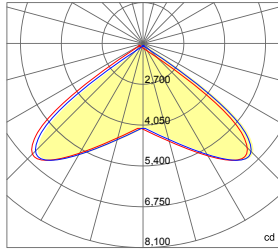
#### Illumination-90 Degree Beaming Angle

Height	Beam Diameter	LUX
2m	φ 4.4m	2230LUX
4m	8.7×8.9m	557LUX
6m	13.1×13.3m	248LUX
8m	17.4×17.7m	139LUX
10m	21.8×22.2m	89LUX

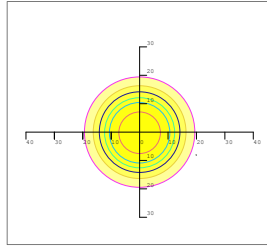
Beam Angle (50% max)	90 DEG
Luminous Flux (IES)	18,000 lm
Light Efficacy (IES)	120 lm/W
Cutoff Classification	Cutoff

## Photometrics

### 110 DEGREE LENS



— 0.0~180.0  
— 90.0~270.0

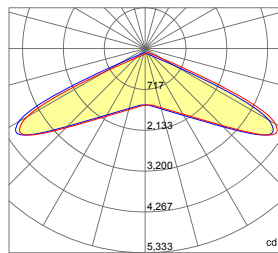


Mounting Height 10m, 0 Tilt,  
20LUX-0.2LUX

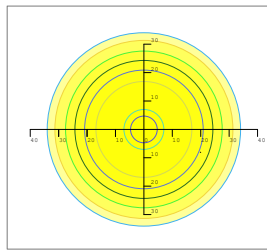
Height	Rectangular Light Spot	LUX
2m	4.0x4.3m	1030LUX
4m	8.0x8.6m	257LUX
6m	12.0x13.0m	114LUX
8m	15.9x17.3m	64LUX
10m	19.9x21.6m	41LUX

Beam Angle (50% max)	110 DEG
Luminous Flux (IES)	18,000 lm
Light Efficacy (IES)	120 lm/W
Cutoff Classification	Cutoff

### 150 DEGREE LENS



— 0.0~180.0  
— 90.0~270.0

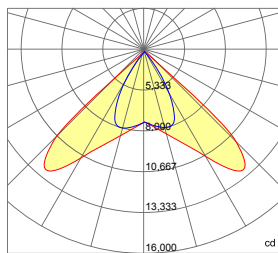


Mounting Height 10m, 0 Tilt,  
20LUX-0.2LUX

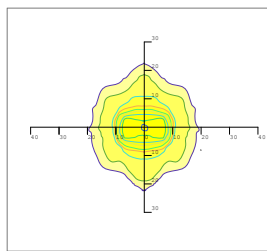
Height	Rectangular Light Spot	LUX
2m	1.8x3.3m	501LUX
4m	3.7x10.7m	125LUX
6m	5.5x16.0m	56LUX
8m	7.4x21.4m	31LUX
10m	9.2x26.7m	20LUX

Beam Angle (50% max)	150 DEG
Luminous Flux (IES)	18,000 lm
Light Efficacy (IES)	120 lm/W
Cutoff Classification	Cutoff

### 60 x 100 DEGREE LENS



— 0.0~180.0  
— 90.0~270.0



Mounting Height 10m, 0 Tilt,  
20LUX-0.2LUX

Height	Rectangular Light Spot	LUX
2m	1.5x2.2m	1742LUX
4m	2.9x4.4m	435LUX
6m	4.4x6.6m	194LUX
8m	5.8x8.7m	109LUX
10m	7.3x10.9m	70LUX

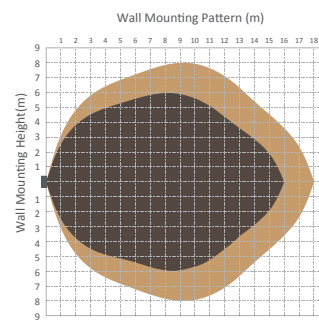
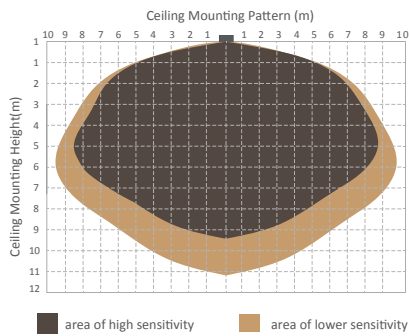
Beam Angle (50% max)	60x100 DEG
Luminous Flux (IES)	18,000 lm
Light Efficacy (IES)	120 lm/W
Cutoff Classification	Cutoff

# Microwave Sensor & Dimmer Option



Technical Data			
Operating voltage	120-277V	Standby power	approx. 0.5W
Switched power	Max.capacitive load: 800W @277V, 400W@120V	Heating time	20s
Detection area	10/50/75/100%, can be customized	Sensor principle	Microwave motion
Hold time	5S/30S/1min/5min/10min/20min/30min, can be customized	Microwave frequency	5.8GHz+/-75MHz
Standby period	0s/10s/1min/5min/10min/30min/1h/+∞can be customized	Microwave power	<0.2mw
Standby dimming level	10%/20%/30%/50% can be customized	Detection range	Max. (φxH):18m x 10m
Daylight threshold	2~50lux daylight/twilight/darkness, can be customized	Detection angle	30° ~ 150°
Operating temperature	-35°C ~ +70°C	Mounting height	Max.10m
IP rating	IP20, IP65(mounting in Hytronik special box)	Certificate	ETL, FCC

## Detection Pattern



## Setting

	Detection Area			Hold-time			Daylight Sensor			Stand-by Period (Corridor function)			Stand-by Dimming Level				
	1	2		1	2	3	1	2		1	2	3		1	2		
I	●	●	100%	●	●	●	5s	●	●	Disable	●	●	●	0s	●	●	10%
II	●	○	75%	●	●	○	30s	●	○	50lux	●	●	○	10s	●	○	20%
III	○	●	50%	●	○	●	1min	○	●	10lux	●	○	●	1min	○	●	30%
IV	○	○	10%	●	○	○	5min	○	○	2lux	●	○	●	5min	○	○	50%
V				○	●	●	10min				○	●	●	10min			
VI				○	●	○	20min				○	●	○	30min			
VII				○	○	○	30min				○	○	●	1h			
VIII											○	○	○	+∞			

- Detection area can be reduced by selecting the combination on the DIP switches to fit precisely for each specific application.
- Hold-time means the time period you would like to keep the lamp on 100% after the person has left the detection area.
- The daylight threshold can be set on DIP switches, to fit for particular application.
- This is the time period you would like to keep at the low light output level before it is completely switched off in the long absence of people. Note: 0 means on/off control; +∞ means 2 steps of dimming control, fixture never switch off.
- This is the dimmed low light output level you would like to have after the hold-time in the absence of people.



# Infrared Sensor & Dimmer Option



Technical Data	
<ul style="list-style-type: none"> <li>120/277 VAC, 50/60Hz</li> <li>- Load @120 VAC 0-800W Ballast or Incandescent</li> <li>- Load @277 VAC 0-1200W Ballast</li> </ul>	<ul style="list-style-type: none"> <li>Sensitivity: None, Low, Med, Max; Default Max</li> <li>Setpoint: None, 1-250 fc, Auto; Default 4 fc</li> <li>Ramp up time: None, 1-60 sec.; Default None</li> </ul>
<ul style="list-style-type: none"> <li>230 VAC, 50Hz; Load 0-300W Ballast</li> </ul>	<ul style="list-style-type: none"> <li>Fade Down Time: None, 1-60 sec.; Default None</li> <li>Operating Temperature: -40-167°F (-40-75°C)</li> <li>Operating Humidity: 20-90%</li> </ul>
<ul style="list-style-type: none"> <li>Relay Life Rating: 200,000 Cycles (120/277 VAC); 50,000 Cycles (230 VAC)</li> </ul>	<ul style="list-style-type: none"> <li>Weight: 2.8 oz (80 grams)</li> <li>IP66, CE Compliant</li> <li>TUV, UL and cUL Listed</li> </ul>
<ul style="list-style-type: none"> <li>High Mode: 0-10 V; Default 10 V</li> <li>Low Mode: Off, 0-9.8 V; Default 1 V</li> <li>Time Delay: 30 Sec., 5-30 min.; Default 5 min.</li> <li>Cut Off Delay: None, 1-60 min. 1-5 hrs.; Default 1hr.</li> </ul>	<ul style="list-style-type: none"> <li>Five Year Warranty</li> </ul>

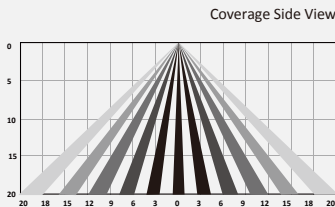
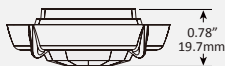
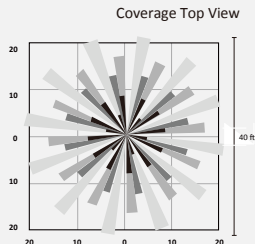
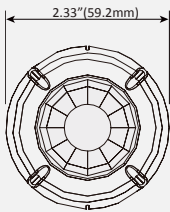
## Coverage Pattern

Density and range of the coverage pattern are determined by the type of lens and mounting height

### L3: 360° Coverage

L3 has a high density lens that covers a 40' diameter area at a height of 20'.

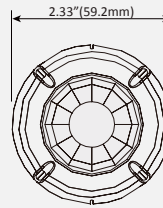
FSP-L3 High Density/Reduced Range Lens



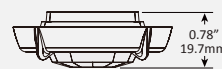
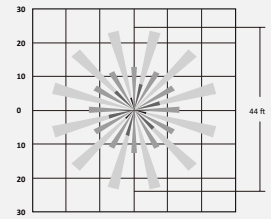
### L2: 360° Coverage

L2 lens provides a 44' diameter coverage area when mounted at a height of 8'.

L2 Low Density/Wide Range Lens



Coverage Top View



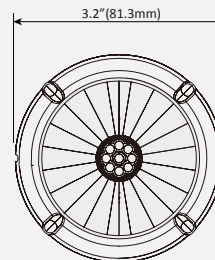
Coverage Side View



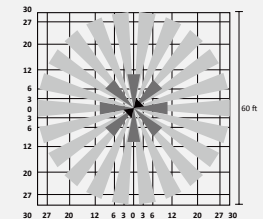
### L4: 360° Coverage

L4 is designed for mounting at heights between 30' to 40'. Its coverage area can be up to 60' in diameter when mounted at 40'.

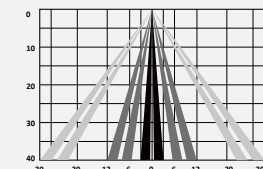
L4 40 Foot High Bay Lens



Coverage Top View



Coverage Side View

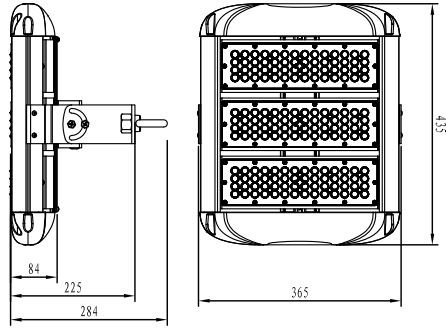
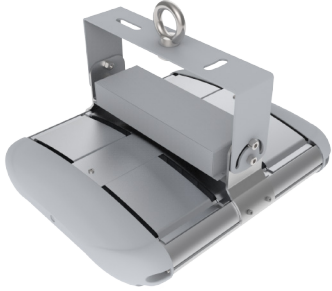


## Setting

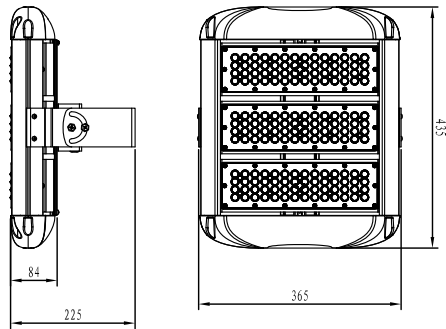
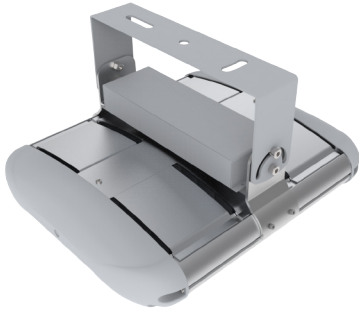
Refer to Dimmer&Remotion operation guidance.



### U Bracket+Hanging Ring



### U Bracket, Long Axial Mount



### Surface Mount Bracket

