



# USAVE LED

COMMERCIAL LED EXPERTS



## USHBxxxWCM SERIES

The USHBxxxWCM series is highbay light which features exceptional efficiency, modern design and installation flexibility. Developed with latest generation of solid-state lighting and electronic driver technologies, they stand above the competition by offering highly efficient Spike or Cooling Fin construction maximizing performance and improving overall energy savings. Perfect for offices, schools, hospital, warehouse, factory and other commercial buildings.

RoHS



## USHB100WCM

14,000LM

192PCS LED

429 × 429 × 159mm

4.5kg ± 5%



## USHB150WCM

21,000LM

288PCS LED

429 × 429 × 159mm

4.5kg ± 5%

## USHB200WCM

28,000LM

384PCS LED

429 × 429 × 159mm

5.3kg ± 5%



## USHB240WCM

33,600LM

480PCS LED

429 × 429 × 159mm

5.3kg ± 5%

## USHB300WCM

43,500LM

112PCS LED

429 × 429 × 225mm

7.1kg ± 5%

## USHB400WCM

58,000LM

144PCS LED

429 × 429 × 225mm

7.4kg ± 5%



## USHB480WCM

69,600LM

192PCS LED

429 × 429 × 225mm

7.4kg ± 5%



## Performance

➤ Wattage	100/150/200/240/300/400/480W
➤ Light Source	Philips Lumileds
➤ Driver	Meanwell
➤ Lamp Luminous Flux	140LM/W ± 5% (100/150/200/240W) 145LM/W ± 5% (300/400/480W)
➤ CRI	Ra > 70/80
➤ CCT	2700-6500K
➤ Rated Voltage	AC 90-305V 50/60Hz
➤ Power Factor	> 0.95
➤ Beam Angle	60°/120° (100/150/200/240W) 30°/60°/90°/120° (300/400/480W)
➤ Heat Sink	Aluminum Cooling Fin / Aluminum Rivet
➤ Operating Temp	-40°C ~ 60°C

## Application

The USHBxxxWCM Series is designed to be one of the most versatile luminaires to date. Offering multiple mounting options and with beam angles have 30°, 60°, 90°, 120°, it is truly exceptional in all environments.

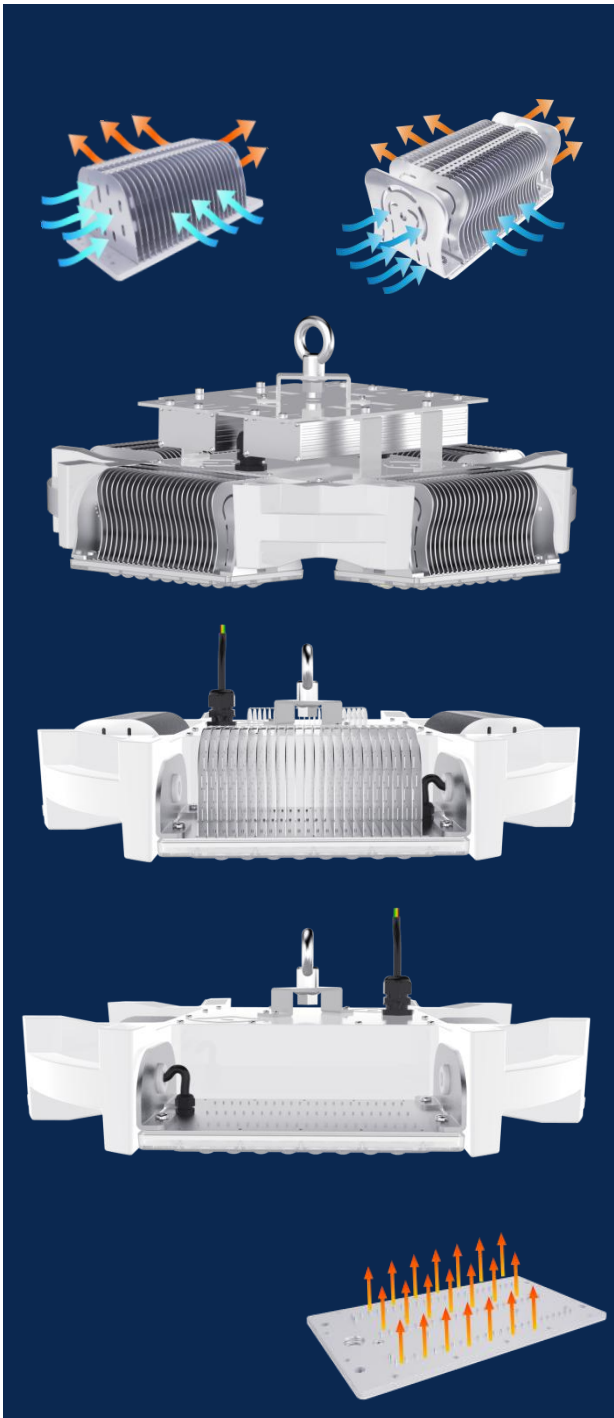
- Shed
- Airport
- Hospital
- Workshop
- Warehouse
- Shopping Malls
- Indoor Playground





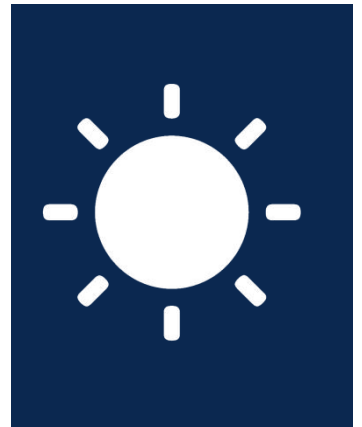
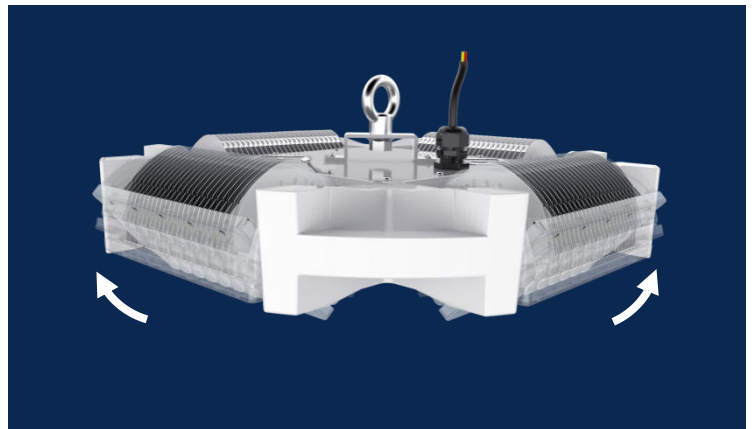
## Two Cooling Way

- Aluminum Spike
- Aluminum Cooling Fin



## Module Adjustable

- Toolless light direction adjustment
- 16 tick-tock, 200° rotatable



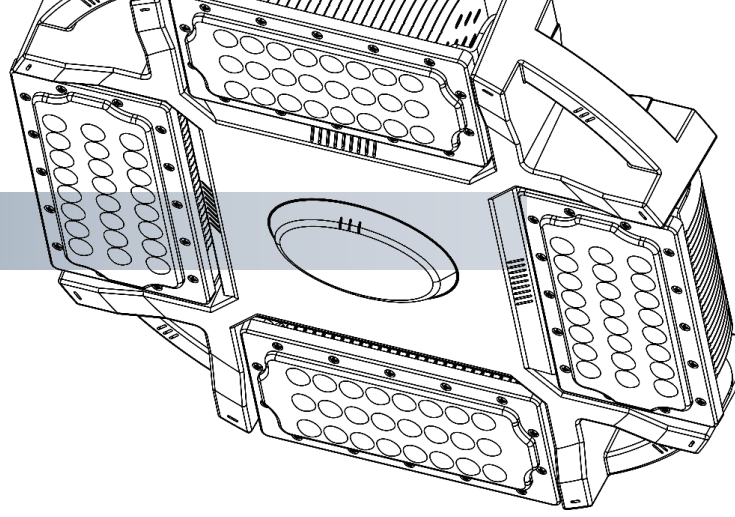
## Ultralight

- Whole light 4.3 ~ 7.4Kg
- Lower freight cost

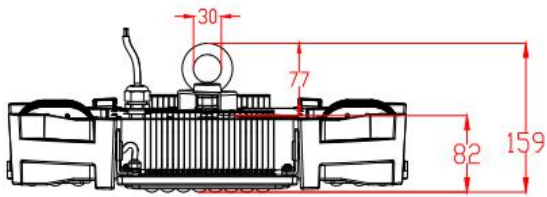
## High Luminous Flux

- 140lm/W system efficiency
- Save 30% energy

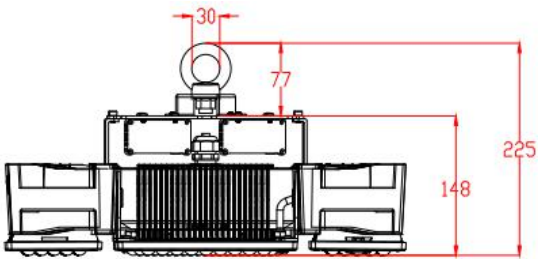




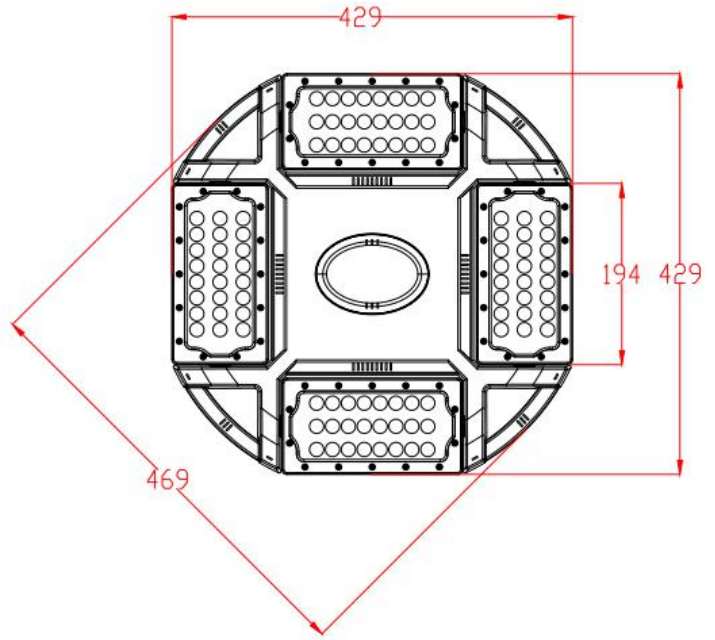
## Dimension



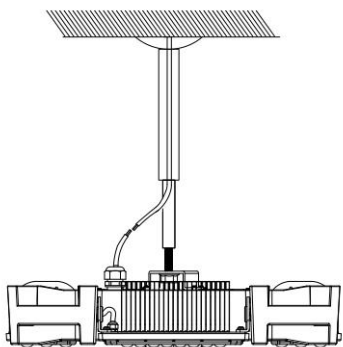
100/150/200/240W



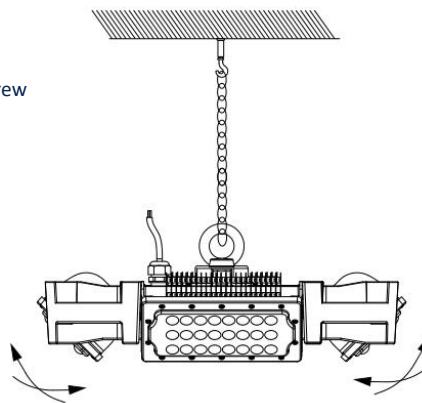
300/400/480W



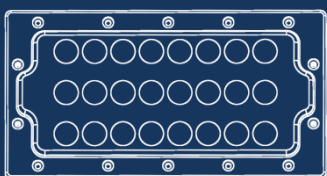
## Installation



Optional accessories 1  
Extension aluminum pipe



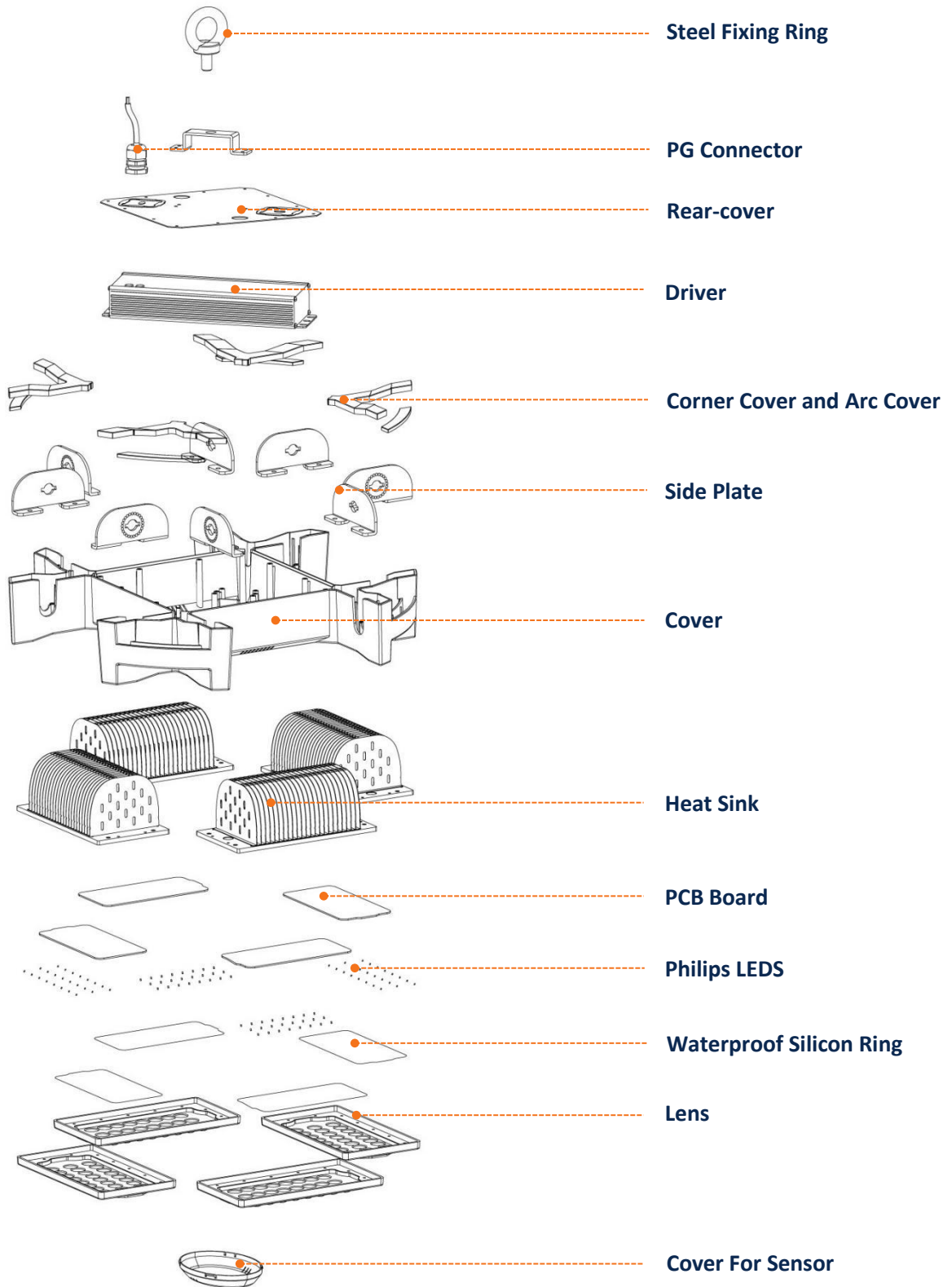
Optional accessories 2  
Iron chain



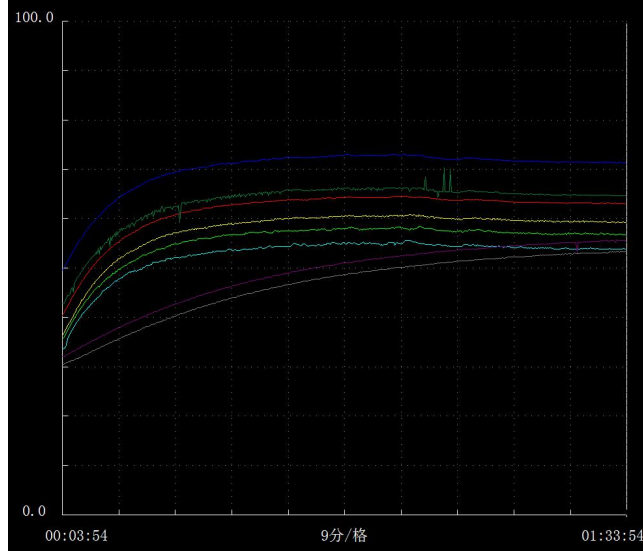
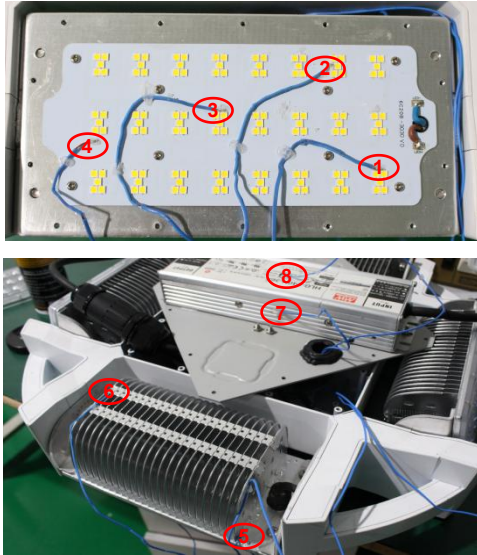
## Lens

- Imitation diamond surface design
- Light transmittance as high as 92%

## Construction

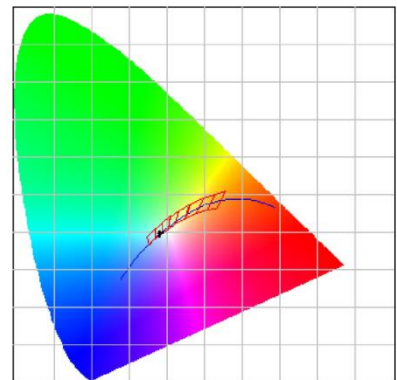
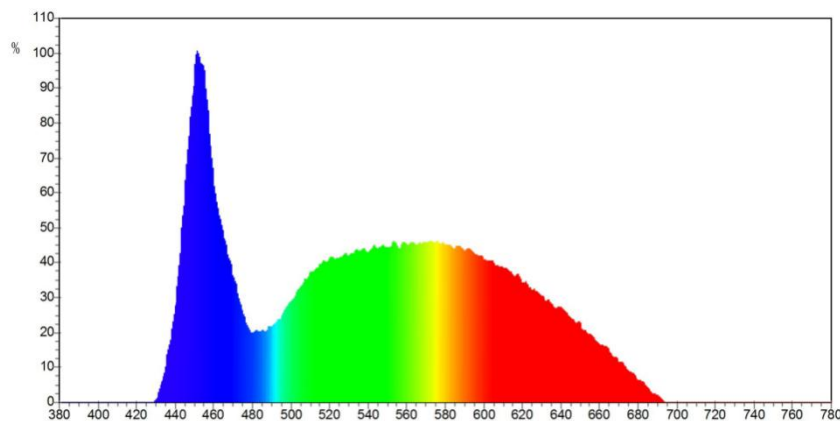


## Temperature rise test (USHB240WCM)



Test Point	Time(min)	00:00:00	00:20:00	00:40:00	01:00:00	01:20:00	01:40:00
CH1 LED		29.4	60.1	64	64.4	63.4	63.2
CH2 LED		28.9	62.2	65.9	66.3	64.9	64.8
CH3 LED		29.7	68.8	72.5	73	71.6	71.5
CH4 PCB Board		29.4	56.6	60	60.9	59.5	59.5
CH5 Heat sink		29	54.1	57.6	57.9	57	56.9
CH6 Heat sink		28.6	51.5	54.4	55.4	54.1	54
CH7 Heat sink		30.1	41.8	49.1	52.8	54.9	55.9
CH8 LED Driver		29.9	39.5	46.8	50.5	52.6	53.7

## System test report (USHB240WCM- 6000K)



### Electrical parameters

Flux: 34331.997 lm

P: 140.936 lm/w

P: 32604.68 mw

I: 1125.0 mA

V: 220.30 V

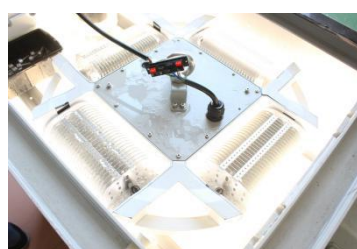
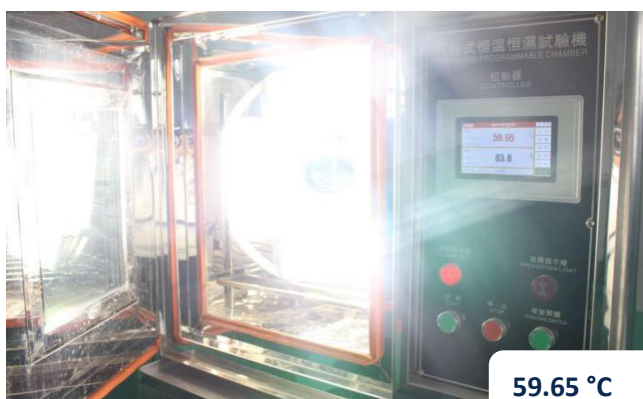
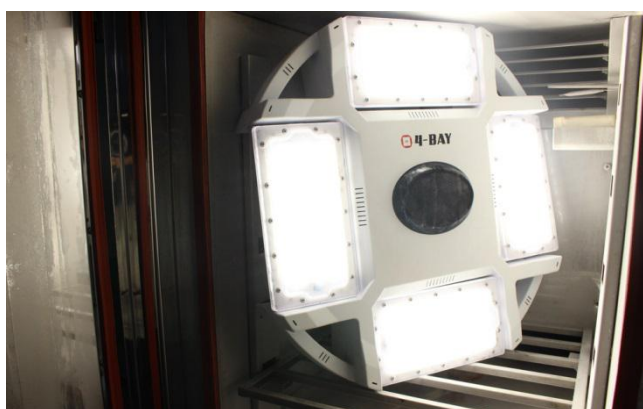
P: 243.600 w

PF: 0.9790



## High-Low Temperature Testing

The Test equipment opening 2hours, keeping temperature  $< -40^{\circ}\text{C}$ , the lamp working fine.  
The Test equipment opening 4hours, keeping temperature  $> 60^{\circ}\text{C}$ , the lamp keep working fine.



## Salt Spray Test

The heat sink processed by electrical surging so that it has good corrosion resistance.

## Uv Aging Test

The test time is about 1440 hours. After test the lamp working regularly, no discoloration appearance, no yellowing of the pc lens, no rust of the support





## Packing



Model	Size of Box	Weight of Box	Size of Carton	Gross Weight of Carton	Box PCS /Carton
USHB100WCM	47*46*15cm	5.3KG	50*49*66cm	22.7KG	4
USHB150WCM	47*46*15cm	5.3KG	50*49*66cm	22.7KG	4
USHB200WCM	47*46*15cm	6.1KG	50*49*66cm	26.4KG	4
USHB240WCM	47*46*15cm	6.1KG	50*49*66cm	26.5KG	4
USHB300WCM	49*47*25cm	8.4KG	50*48*52cm	18.2KG	2
USHB400WCM	49*47*25cm	8.8KG	50*49*52cm	18.9KG	2
USHB480WCM	49*47*25cm	8.8KG	50*49*52cm	18.9KG	2