

Product Specifications



USHIBAY150WNTL

FEATURES

- Linear Design
- System Light Efficacy >100 LPW
- Easy Installation & Maintenance
- IP65/ IP30(PIR)
- Five Years Warranty
- ETL, DLC, CE, RoHS, CB, WEEE

TYPICAL APPLICATIONS

- Warehouse/Manufacturing Facilities
- Convention Centers/Sporting Arenas
- Big-Box Retail Stores
- Cold Storage Facilities
- Gymnasiums

SPECIFICATIONS

PERFORMANCE

LED Chip	OSRAM
Lumen Output (IES)	15,000 lm
Power Consumption	150 W
Efficacy (IES)	>100 lm/W
Beam Angle	70/135°, 30/100°, 90°,110°,150°, 60/100°
Color Temperature	4500~5500K (2500~5500K Optional)
CRI	≥80
Lumen Maintenance	L70>70,000 hours (Calculated Using TM-21 Calculator)
Input Voltage	100-277 VAC (347/480 VAC Optional) Dimming Optional
Power Factor	0.95 minimum

ENVIRONMENTAL

IP Rating	IP65/ IP30(PIR)
Operating Temperature	-30 to 45°C (-22 to 113°F)
Storing Temperature	-40 to 80°C (-40 to 167°F)
Humidity	15% to 95% RH

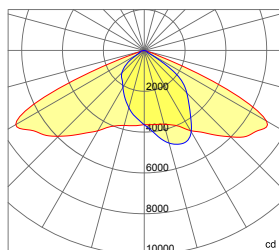
PHYSICAL

Dimensions (L×W×H)	945×159×114 mm (37.2×6.3×4.5 in) (Steel Cable)
Weight	5.6 kg (12.3 lbs) (Steel Cable)
Mounting Options	Steel Cable, Surface Mount
Fixture Material	Aluminum Alloy

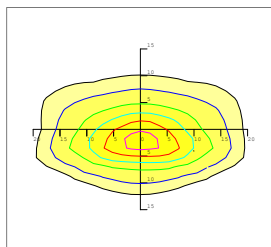
WARRANTY

5 Years

70×135 DEGREE LENS (Forward 5°)



— 0.0~180.0
— 90.0~270.0



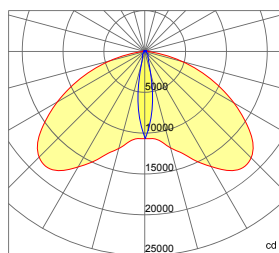
Mounting Height 9m, 0 Tilt,
50LUX-5LUX

Illumination-70/135 Degree Beaming Angle

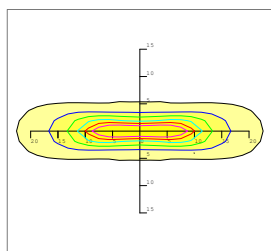
Height	Rectangular Light Spot	LUX
6m	11×29m	97LUX
7m	13×34m	72LUX
8m	15×39m	55LUX
9m	16×43m	44LUX
10m	18×48m	35LUX

Beam Angle (50% max)	70×135 DEG
Field Angle (10%)	100×160 DEG
Luminous Flux (IES)	15,000 lm
Light Efficacy (IES)	100 lm/W
Cutoff Classification	Cutoff

30×100 DEGREE LENS



— 0.0~180.0
— 90.0~270.0



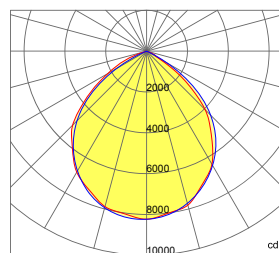
Mounting Height 10m, 0 Tilt,
50LUX-5LUX

Illumination-30/100 Degree Beaming Angle

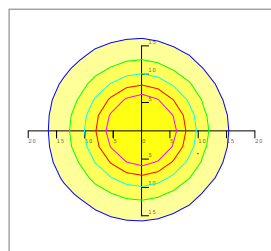
Height	Rectangular Light Spot	LUX
7m	3×13m	261LUX
8m	4×15m	199LUX
9m	4×17m	157LUX
10m	4×19m	127LUX
11m	5×21m	104LUX

Beam Angle (50% max)	30×100 DEG
Field Angle (10%)	50×120 DEG
Luminous Flux (IES)	15,000 lm
Light Efficacy (IES)	>100 lm/W
UGR	12/39
Cutoff Classification	Semi-Cutoff

90 DEGREE LENS



— 0.0~180.0
— 90.0~270.0



Mounting Height 16m, 0 Tilt,
50LUX-5LUX

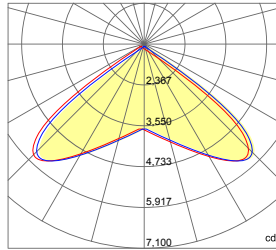
Illumination-90 Degree Beaming Angle

Height	Beam Diameter	LUX
6m	φ 16m	133LUX
7m	φ 19m	101LUX
8m	φ 23m	78LUX
9m	φ 24m	62LUX
10m	φ 28m	50LUX

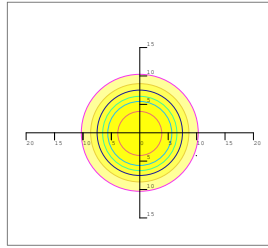
Beam Angle (50% max)	90 DEG
Field Angle (10%)	130 DEG
Luminous Flux (IES)	15,000 lm
Light Efficacy (IES)	100 lm/W
UGR	25
Cutoff Classification	Cutoff

Photometrics

110 DEGREE LENS



— 0.0~180.0
— 90.0~270.0

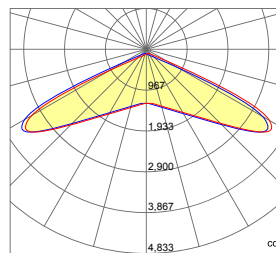


Mounting Height 10m, 0 Tilt,
50LUX-5LUX

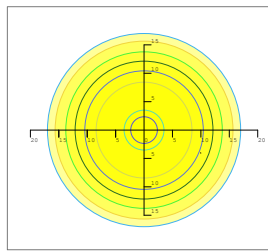
Illumination-110 Degree Beaming Angle		
Height	Rectangular Light Spot	LUX
2m	4.0×4.3m	901LUX
4m	8.0×8.6m	225LUX
6m	12.0×13.0m	100LUX
8m	15.9×17.3m	56LUX
10m	19.9×21.6m	36LUX

Beam Angle (50% max)	110 DEG
Luminous Flux (IES)	15,000 lm
Light Efficacy (IES)	100 lm/W
Cutoff Classification	Cutoff

150 DEGREE LENS



— 0.0~180.0
— 90.0~270.0

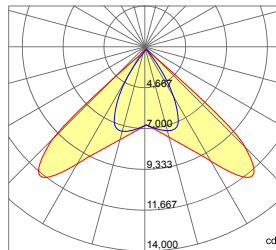


Mounting Height 10m, 0 Tilt,
50LUX-5LUX

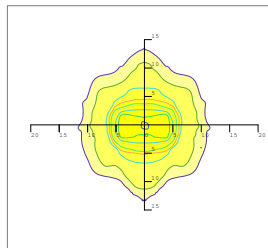
Illumination-150 Degree Beaming Angle		
Height	Rectangular Light Spot	LUX
2m	1.8×5.3m	455LUX
4m	3.7×10.7m	114LUX
6m	5.5×16.0m	50LUX
8m	7.4×21.4m	28LUX
10m	9.2×26.7m	18LUX

Beam Angle (50% max)	150 DEG
Luminous Flux (IES)	15,000 lm
Light Efficacy (IES)	100 lm/W
Cutoff Classification	Cutoff

60 x 100 DEGREE LENS



— 0.0~180.0
— 90.0~270.0

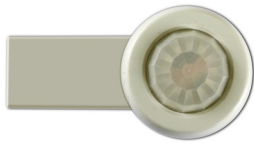


Mounting Height 10m, 0 Tilt,
50LUX-5LUX

Illumination-60x100 Degree Beaming Angle		
Height	Rectangular Light Spot	LUX
2m	1.5×2.2m	1480LUX
4m	2.9×4.4m	370LUX
6m	4.4×6.6m	164LUX
8m	5.8×8.7m	92LUX
10m	7.3×10.9m	59LUX

Beam Angle (50% max)	60x100 DEG
Luminous Flux (IES)	15,000 lm
Light Efficacy (IES)	100 lm/W
Cutoff Classification	Cutoff

Infrared Sensor & Dimmer Option



Technical Data

<ul style="list-style-type: none"> 120/277 VAC, 50/60Hz - Load @120 VAC 0-800W Ballast or Incandescent - Load @277 VAC 0-1200W Ballast 	<ul style="list-style-type: none"> Sensitivity: None, Low, Med, Max; Default Max Setpoint: None, 1-250 fc, Auto; Default 4 fc Ramp up time: None, 1-60 sec.; Default None
<ul style="list-style-type: none"> 230 VAC, 50Hz; Load 0-300W Ballast 	<ul style="list-style-type: none"> Fade Down Time: None, 1-60 sec.; Default None
<ul style="list-style-type: none"> Relay Life Rating: 200,000 Cycles (120/277 VAC); 50,000 Cycles (230 VAC) 	<ul style="list-style-type: none"> Operating Temperature: -40-167°F (-40-75°C) Operating Humidity: 20-90%
<ul style="list-style-type: none"> High Mode: 0-10 V; Default 10 V 	<ul style="list-style-type: none"> Weight: 2.8 oz (80 grams)
<ul style="list-style-type: none"> Low Mode: Off, 0-9.8 V; Default 1 V 	<ul style="list-style-type: none"> IP66, CE Compliant
<ul style="list-style-type: none"> Time Delay: 30 Sec., 5-30 min.; Default 5 min. 	<ul style="list-style-type: none"> TUV, UL and cUL Listed
<ul style="list-style-type: none"> Cut Off Delay: None, 1-60 min. 1-5 hrs.; Default 1hr. 	<ul style="list-style-type: none"> Five Year Warranty

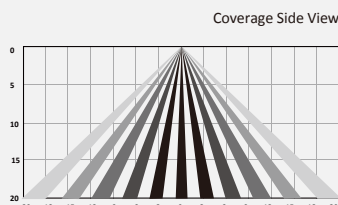
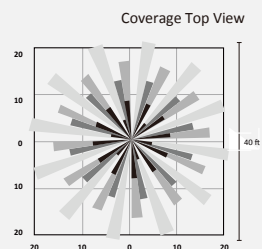
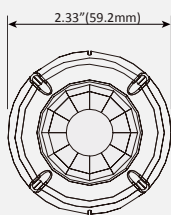
Coverage Pattern

Density and range of the coverage pattern are determined by the type of lens and mounting height

L3: 360° Coverage

L3 has a high density lens that covers a 40' diameter area at a height of 20'.

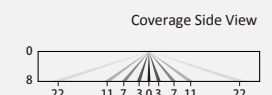
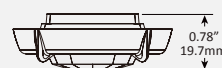
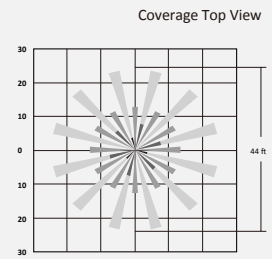
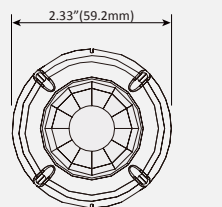
FSP-L3 High Density/Reduced Range Lens



L2: 360° Coverage

L2 lens provides a 44' diameter coverage area when mounted at a height of 8'.

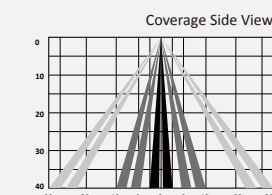
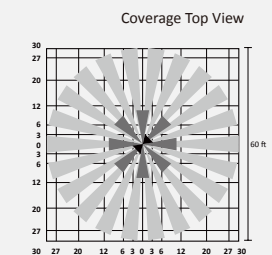
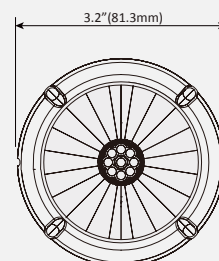
L2 Low Density/Wide Range Lens



L4: 360° Coverage

L4 is designed for mounting at heights between 30' to 40'. Its coverage area can be up to 60' in diameter when mounted at 40'.

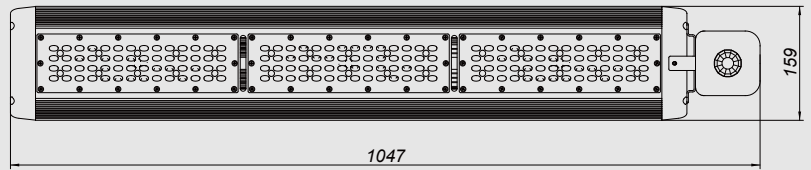
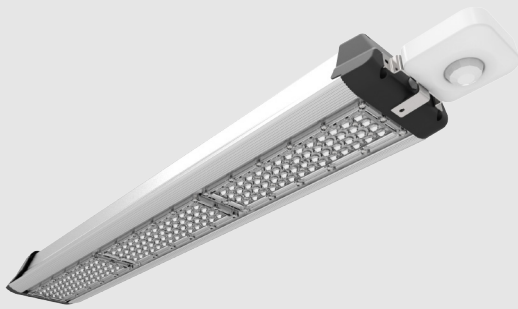
L4 40 Foot High Bay Lens



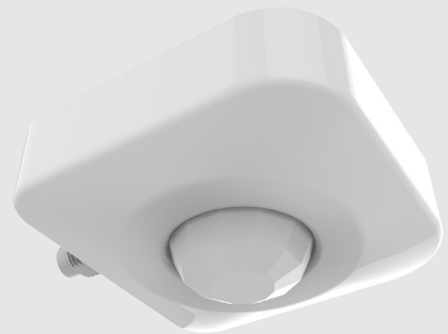
Setting

Refer to Dimmer&Remotion operation guidance.

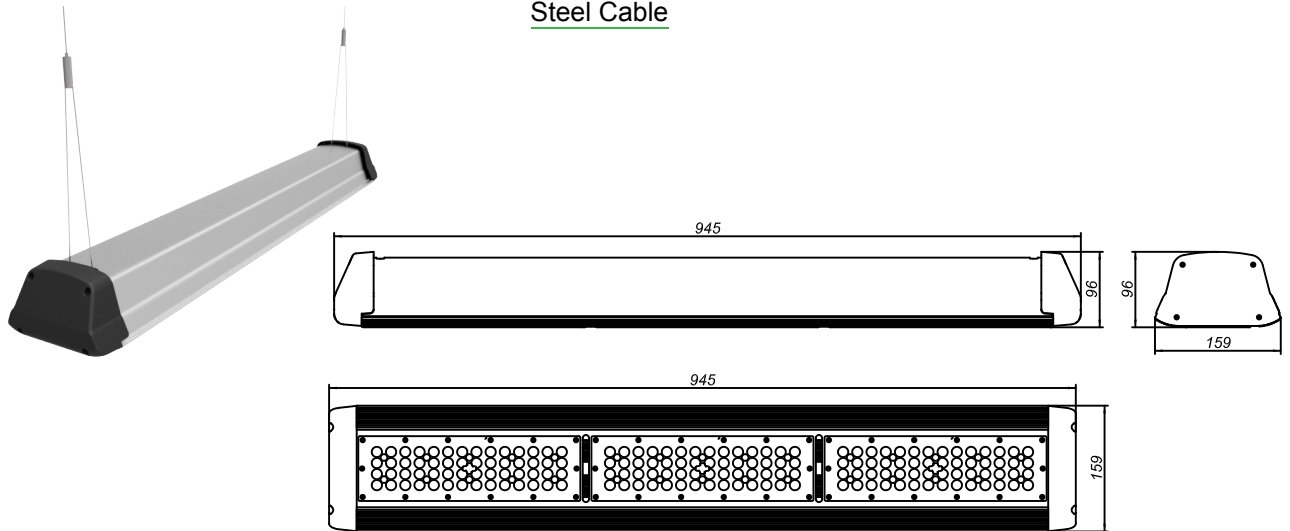
PIR Sensor Option



Input Voltage	AC 120-277 V, 60HZ
Load Requirement	800VA @ 120V AC Fluorescent Ballasts NO Min 1200VA @ 277V AC Fluorescent Ballasts NO Min
Load Horsepower	1/6HP
Time Delay Adjustment	Fixed 15 seconds to 30 minutes
Operating Temperature	32° to 131° F (0° to 55° C)
Humidity range	0%-90%RH, non-condensing
Coverage range	Up to 30 ft mounting / 360 Degrees
Terminal Line	Black-Hot, White-Neutral, Red-Load
Warranty	2 Years
IP Rating	IP 30
Sensor Type	IR Sensor



Steel Cable



Surface Mount Bracket

