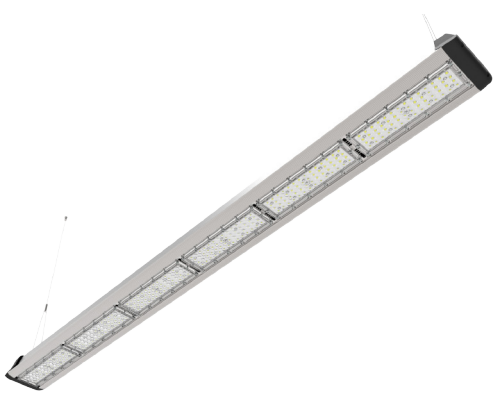


Product Specifications



USHIBAY300WNTL

FEATURES

- Linear Modular Design
- System Light Efficacy >100 LPW
- Easy Installation & Maintenance
- IP65/ IP30(PIR)
- Five Years Warranty
- ETL, DLC, CE, RoHS, CB, WEEE

TYPICAL APPLICATIONS

- Warehouse/Manufacturing Facilities
- Convention Centers/Sporting Arenas
- Big-Box Retail Stores
- Cold Storage Facilities
- Gymnasiums

SPECIFICATIONS

PERFORMANCE

LED Chip	OSRAM
Lumen Output (IES)	>30,000 lm
Power Consumption	300 W
Efficacy (IES)	>100 lm/W
Beam Angle	70/135°, 30/100°, 90°,110°,150°, 60x 100°
Color Temperature	4500~5500K (2500~5500K Optional)
CRI	≥80
Lumen Maintenance	L70>70,000 hours (Calculated Using TM-21 Calculator)
Input Voltage	100-277 VAC (347/480 VAC Optional) Dimming Optional
Power Factor	0.95 minimum

ENVIRONMENTAL

IP Rating	IP65/ IP30(PIR)
Operating Temperature	-30 to 45°C (-22 to 113°F)
Storing Temperature	-40 to 80°C (-40 to 167°F)
Humidity	15% to 95% RH

PHYSICAL

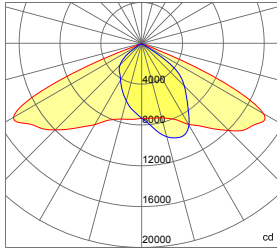
Dimensions (L×W×H)	1830×159×114 mm (72.0×6.3×4.5 in) (Steel Cable)
Weight	11.4 kg (25.3 lbs) (Steel Cable)
Mounting Options	Steel Cable, Surface Mount
Fixture Material	Aluminum Alloy

WARRANTY

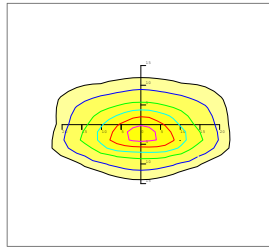
5 Years

Photometrics

70×135 DEGREE LENS



— 0.0~180.0
— 90.0~270.0

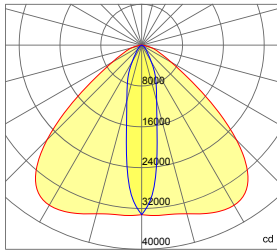


Mounting Height 13m, 0 Tilt,
50LUX-5LUX

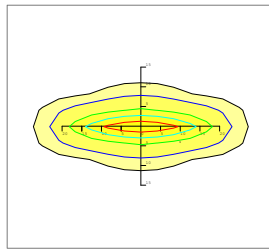
Illumination-70/135 Degree Beaming Angle		
Height	Rectangular Light Spot	LUX
8m	15×39m	112LUX
9m	16×43m	89LUX
10m	18×48m	73LUX
11m	20×53m	61LUX
12m	22×58m	51LUX

Beam Angle (50% max)	70×135 DEG
Field Angle (10%)	100×160 DEG
Luminous Flux (IES)	30,000 lm
Light Efficacy (IES)	100 lm/W
Cutoff Classification	Cutoff

30×100 DEGREE LENS



— 0.0~180.0
— 90.0~270.0

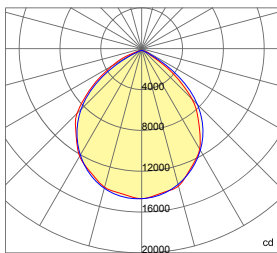


Mounting Height 13m, 0 Tilt,
50LUX-5LUX

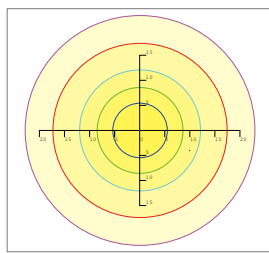
Illumination30/100 Degree Beaming Angle		
Height	Rectangular Light Spot	LUX
9m	4×17m	314LUX
10m	4×19m	254LUX
11m	5×21m	209LUX
12m	5×22m	176LUX
13m	6×24m	149LUX

Beam Angle (50% max)	30×100 DEG
Field Angle (10%)	50×120 DEG
Luminous Flux (IES)	30,000 lm
Light Efficacy (IES)	>100 lm/W
UGR	11/38
Cutoff Classification	Semi-Cutoff

90 DEGREE LENS



— 0.0~180.0
— 90.0~270.0



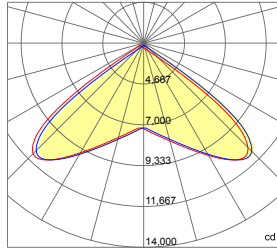
Mounting Height 25m, 0 Tilt,
50LUX-5LUX

Illumination-90 Degree Beaming Angle		
Height	Beam Diameter	LUX
9m	φ 24m	133LUX
10m	φ 28m	109LUX
11m	φ 31m	90LUX
12m	φ 34m	77LUX
13m	φ 36m	65LUX

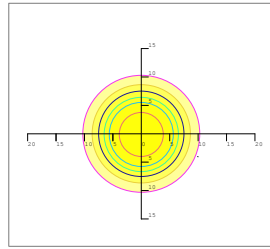
Beam Angle (50% max)	90 DEG
Field Angle (10%)	130 DEG
Luminous Flux (IES)	30,000 lm
Light Efficacy (IES)	100 lm/W
UGR	27
Cutoff Classification	Cutoff

Photometrics

110 DEGREE LENS



— 0.0~180.0
— 90.0~270.0

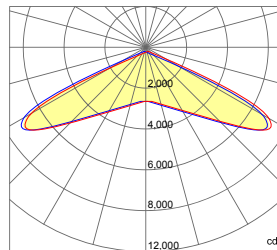


Mounting Height 10m, 0 Tilt,
50LUX-5LUX

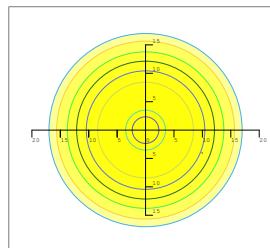
Height	Rectangular Light Spot	LUX
2m	4.0x4.3m	1785LUX
4m	8.0x8.6m	446LUX
6m	12.0x13.0m	198LUX
8m	15.9x17.3m	116LUX
10m	19.9x21.6m	71LUX

Beam Angle (50% max)	110 DEG
Luminous Flux (IES)	30,000 lm
Light Efficacy (IES)	100 lm/W
Cutoff Classification	Cutoff

150 DEGREE LENS



— 0.0~180.0
— 90.0~270.0

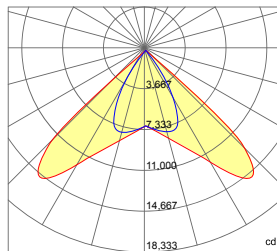


Mounting Height 10m, 0 Tilt,
50LUX-5LUX

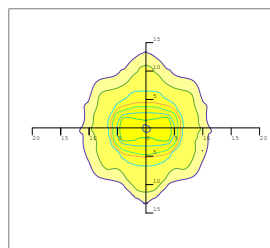
Height	Rectangular Light Spot	LUX
2m	1.8x5.3m	909LUX
4m	3.7x10.7m	227LUX
6m	5.5x16.0m	101LUX
8m	7.4x21.4m	57LUX
10m	9.2x26.7m	36LUX

Beam Angle (50% max)	150 DEG
Luminous Flux (IES)	30,000 lm
Light Efficacy (IES)	100 lm/W
Cutoff Classification	Cutoff

60 x 100 DEGREE LENS



— 0.0~180.0
— 90.0~270.0



Mounting Height 10m, 0 Tilt,
50LUX-5LUX

Height	Rectangular Light Spot	LUX
2m	1.5x2.2m	2974LUX
4m	2.9x4.4m	744LUX
6m	4.4x6.6m	330LUX
8m	5.8x8.7m	186LUX
10m	7.3x10.9m	119LUX

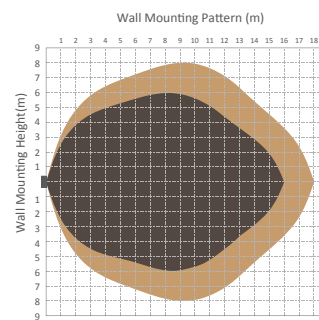
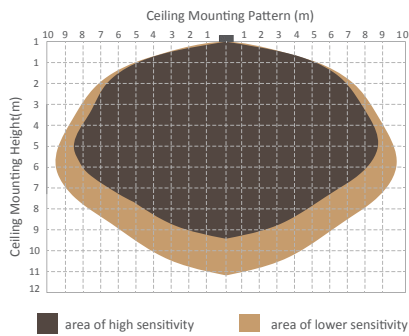
Beam Angle (50% max)	60x100 DEG
Luminous Flux (IES)	30,000 lm
Light Efficacy (IES)	100 lm/W
Cutoff Classification	Cutoff

Microwave Sensor & Dimmer Option



Technical Data			
Operating voltage	120-277V	Standby power	approx. 0.5W
Switched power	Max.capacitive load: 800W @277V, 400W@120V	Heating time	20s
Detection area	10/50/75/100%, can be customized	Sensor principle	Microwave motion
Hold time	5S/30S/1min/5min/10min/20min/30min, can be customized	Microwave frequency	5.8GHz+/-75MHz
Standby period	0s/10s/1min/5min/10min/30min/1h/+∞can be customized	Microwave power	<0.2mw
Standby dimming level	10%/20%/30%/50% can be customized	Detection range	Max. (φxH):18m x 10m
Daylight threshold	2~50lux daylight/twilight/darkness, can be customized	Detection angle	30° ~ 150°
Operating temperature	-35°C ~ +70°C	Mounting height	Max.10m
IP rating	IP20, IP65(mounting in Hytronik special box)	Certificate	ETL, FCC

Detection Pattern



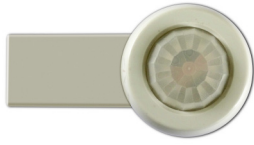
Setting

	Detection Area			Hold-time			Daylight Sensor			Stand-by Period (Corridor function)			Stand-by Dimming Level				
	1	2		1	2	3	1	2		1	2	3	1	2			
I	●	●	100%	●	●	●	5s	●	●	Disable	●	●	●	0s	●	●	10%
II	●	○	75%	●	●	○	30s	●	○	50lux	●	●	○	10s	●	○	20%
III	○	●	50%	●	○	●	1min	○	●	10lux	●	○	●	1min	○	●	30%
IV	○	○	10%	●	○	○	5min	○	○	2lux	●	○	●	5min	○	○	50%
V				○	●	●	10min				○	●	●	10min			
VI				○	●	○	20min				○	●	○	30min			
VII				○	○	○	30min				○	○	●	1h			
VIII											○	○	○	+∞			

- Detection area can be reduced by selecting the combination on the DIP switches to fit precisely for each specific application.
- Hold-time means the time period you would like to keep the lamp on 100% after the person has left the detection area.
- The daylight threshold can be set on DIP switches, to fit for particular application.
- This is the time period you would like to keep at the low light output level before it is completely switched off in the long absence of people. Note: 0 means on/off control; +∞ means 2 steps of dimming control, fixture never switch off.
- This is the dimmed low light output level you would like to have after the hold-time in the absence of people.



Infrared Sensor & Dimmer Option



Technical Data	
<ul style="list-style-type: none"> 120/277 VAC, 50/60Hz - Load @120 VAC 0-800W Ballast or Incandescent - Load @277 VAC 0-1200W Ballast 	<ul style="list-style-type: none"> Sensitivity: None, Low, Med, Max; Default Max Setpoint: None, 1-250 fc, Auto; Default 4 fc Ramp up time: None, 1-60 sec.; Default None
<ul style="list-style-type: none"> 230 VAC, 50Hz; Load 0-300W Ballast 	<ul style="list-style-type: none"> Fade Down Time: None, 1-60 sec.; Default None Operating Temperature: -40-167°F (-40-75°C) Operating Humidity: 20-90%
<ul style="list-style-type: none"> Relay Life Rating: 200,000 Cycles (120/277 VAC); 50,000 Cycles (230 VAC) 	<ul style="list-style-type: none"> Weight: 2.8 oz (80 grams) IP66, CE Compliant TUV, UL and cUL Listed
<ul style="list-style-type: none"> High Mode: 0-10 V; Default 10 V Low Mode: Off, 0-9.8 V; Default 1 V Time Delay: 30 Sec., 5-30 min.; Default 5 min. Cut Off Delay: None, 1-60 min. 1-5 hrs.; Default 1hr. 	<ul style="list-style-type: none"> Five Year Warranty

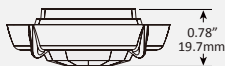
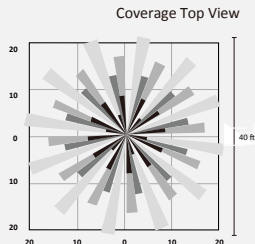
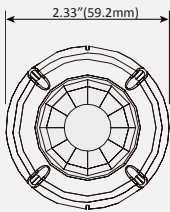
Coverage Pattern

Density and range of the coverage pattern are determined by the type of lens and mounting height

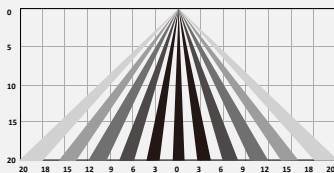
L3: 360° Coverage

L3 has a high density lens that covers a 40' diameter area at a height of 20'.

FSP-L3 High Density/Reduced Range Lens



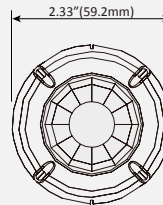
Coverage Side View



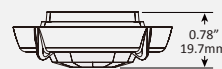
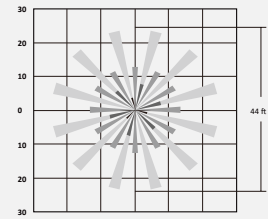
L2: 360° Coverage

L2 lens provides a 44' diameter coverage area when mounted at a height of 8'.

L2 Low Density/Wide Range Lens



Coverage Top View



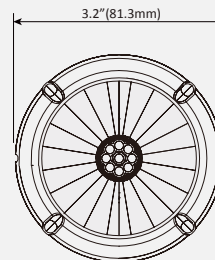
Coverage Side View



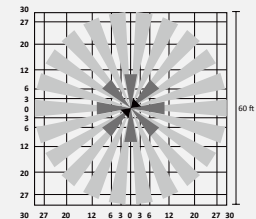
L4: 360° Coverage

L4 is designed for mounting at heights between 30' to 40'. Its coverage area can be up to 60' in diameter when mounted at 40'.

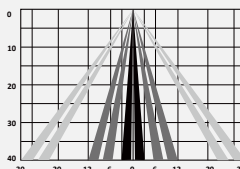
L4 40 Foot High Bay Lens



Coverage Top View



Coverage Side View

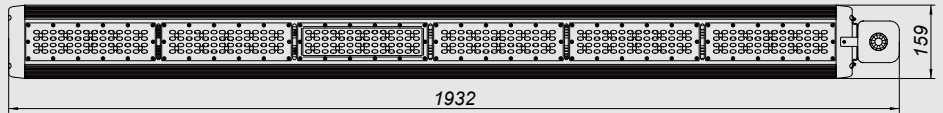


Setting

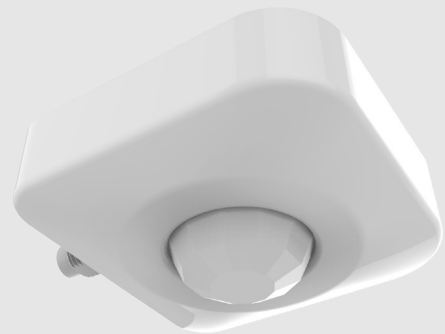
Refer to Dimmer&Remotion operation guidance.

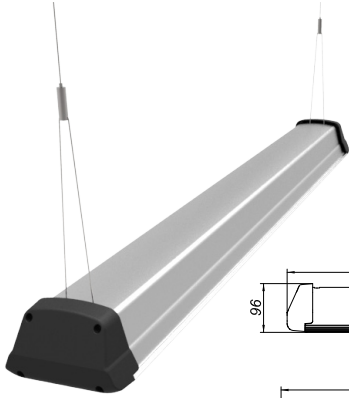


PIR Sensor Option

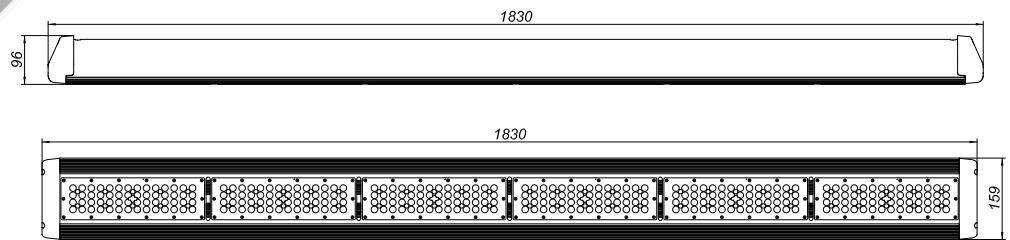


Input Voltage	AC 120-277 V, 60HZ
Load Requirement	800VA @ 120V AC Fluorescent Ballasts NO Min 1200VA @ 277V AC Fluorescent Ballasts NO Min
Load Horsepower	1/6HP
Time Delay Adjustment	Fixed 15 seconds to 30 minutes
Operating Temperature	32° to 131° F (0° to 55° C)
Humidity range	0%-90%RH, non-condensing
Coverage range	Up to 30 ft mounting / 360 Degrees
Terminal Line	Black-Hot, White-Neutral, Red-Load
Warranty	2 Years
IP Rating	IP 30
Sensor Type	IR Sensor





Steel Cable



Surface Mount Bracket

