



Product Specifications



USHIBAY50WNTEL

FEATURES

- Linear Design
- System Light Efficacy >100 LPW
- Easy Installation & Maintenance
- IP65/ IP30(PIR)
- Five Years Warranty
- ETL, DLC, CE, RoHS, CB, WEEE

TYPICAL APPLICATIONS

- Warehouse/Manufacturing Facilities
- Convention Centers/Sporting Arenas
- Big-Box Retail Stores
- Cold Storage Facilities
- Gymnasiums

SPECIFICATIONS

PERFORMANCE

LED Chip	OSRAM
Lumen Output (IES)	>5,000 lm
Power Consumption	50 W
Efficacy (IES)	>100 lm/W
Beam Angle	70/135°, 30/100°, 90°,110°,150°, 60/100°
Color Temperature	4500~5500K (2500~5500K Optional)
CRI	≥80
Lumen Maintenance	L70>70,000 hours (Calculated Using TM-21 Calculator)
Input Voltage	100-277 VAC (347/480 VAC Optional) Dimming Optional
Power Factor	0.95 minimum

ENVIRONMENTAL

IP Rating	IP65/ IP30(PIR)
Operating Temperature	-30 to 45°C (-22 to 113°F)
Storing Temperature	-40 to 80°C (-40 to 167°F)
Humidity	15% to 95% RH

PHYSICAL

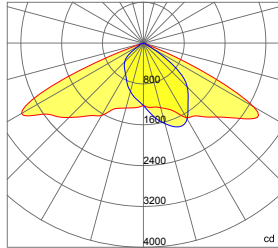
Dimensions (L×W×H)	355×159×114 mm (14.0×6.3×4.5 in) (Steel Cable)
Weight	2.4 kg (5.4 lbs) (Steel Cable)
Mounting Options	Steel Cable, Surface Mount
Fixture Material	Aluminum Alloy

WARRANTY

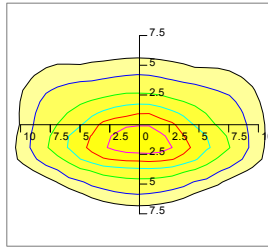
5 Years



70×135 DEGREE LENS (Forward 5°)



— 0.0~180.0
— 90.0~270.0

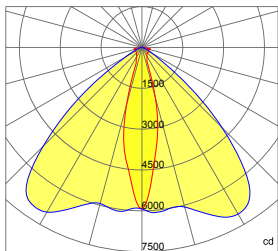


Mounting Hight 5m, 0 Tilt,
50LUX-5LUX

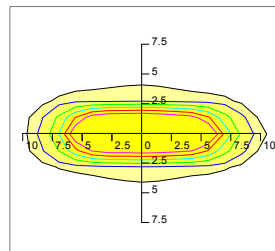
Height	Rectangular Light Spot	LUX
4m	7×19m	60LUX
5m	9×24m	45LUX
6m	11×29m	33LUX
7m	13×34m	25LUX
8m	14×39m	20LUX

Beam Angle (50% max)	70×135 DEG
Field Angle (10%)	100×160 DEG
Luminous Flux (IES)	>5,000 lm
Light Efficacy (IES)	>100 lm/W
Cutoff Classification	Cutoff

30×100 DEGREE LENS



— 0.0~180.0
— 90.0~270.0

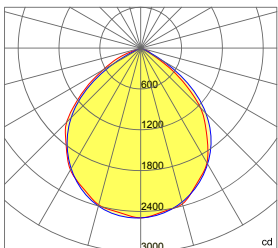


Mounting Hight 7m, 0 Tilt,
50LUX-5LUX

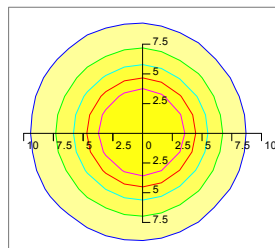
Height	Rectangular Light Spot	LUX
5m	2×9m	168LUX
6m	3×11m	116LUX
7m	3×13m	87LUX
8m	4×15m	66LUX
9m	4×17m	52LUX

Beam Angle (50% max)	30×100 DEG
Field Angle (10%)	50×120 DEG
Luminous Flux (IES)	>5,000 lm
Light Efficacy (IES)	>100 lm/W
UGR	18/23
Cutoff Classification	Cutoff

90 DEGREE LENS



— 0.0~180.0
— 90.0~270.0

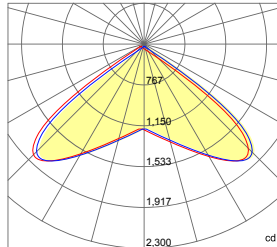


Mounting Hight 8m, 0 Tilt,
50LUX-5LUX

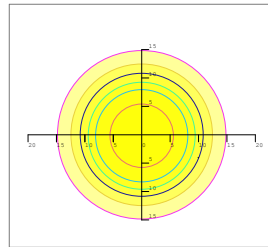
Height	Beam Diameter	LUX
4m	φ 12m	97LUX
5m	φ 14m	67LUX
6m	φ 19m	49LUX
7m	φ 23m	35LUX
8m	φ 24m	28LUX

Beam Angle (50% max)	90 DEG
Field Angle (10%)	130 DEG
Luminous Flux (IES)	>5,000 lm
Light Efficacy (IES)	>100 lm/W
UGR	25
Cutoff Classification	Cutoff

110 DEGREE LENS



— 0.0~180.0
— 90.0~270.0

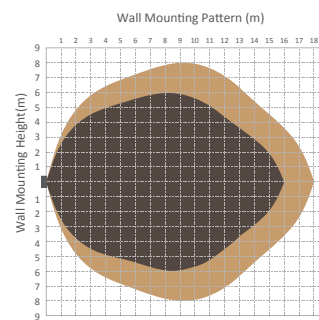
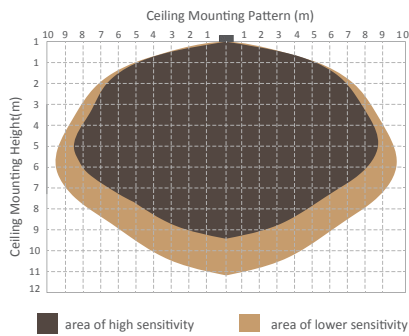


Microwave Sensor & Dimmer Option



Technical Data			
Operating voltage	120-277V	Standby power	approx. 0.5W
Switched power	Max.capacitive load: 800W @277V, 400W@120V	Warm time	20s
Detection area	10%/50/75/100%, can be customized	Sensor principle	Microwave motion detector
Hold time	5S/30S/1min/5min/10min/20min/30min, can be customized	Microwave frequency	5.8GHz+/-75MHz
Standby period	0s/10s/1min/5min/10min/30min/1h/+∞can be customized	Microwave power	<0.2mw
Standby dimming level	10%/20%/30%/50% can be customized	Detection range	Max. (φxH):18m x 10m
Daylight threshold	2~50lux daylight/twilight/darkness, can be customized	Detection angle	30° ~ 150°
Operating temperature	-35°C ~ +70°C	Mounting height	Max.10m
IP rating	IP20, IP65(mounting in Hytronik special box)	Certificate	ETL, FCC

Detection Pattern



Setting

	Detection Area			Hold-time			Daylight Sensor			Stand-by Period (Corridor function)			Stand-by Dimming Level				
	1	2		1	2	3	1	2		1	2	3	1	2			
I	●	●	100%	●	●	●	5s	●	●	Disable	●	●	●	0s	●	●	10%
II	●	○	75%	●	●	○	30s	●	○	50lux	●	●	○	10s	●	○	20%
III	○	●	50%	●	○	●	1min	○	●	10lux	●	○	●	1min	○	●	30%
IV	○	○	10%	●	○	○	5min	○	○	2lux	●	○	●	5min	○	○	50%
V				○	●	●	10min				○	●	●	10min			
VI				○	●	○	20min				○	●	○	30min			
VII				○	○	○	30min				○	○	●	1h			
VIII											○	○	○	+∞			

- Detection area can be reduced by selecting the combination on the DIP switches to fit precisely for each specific application.
- Hold-time means the time period you would like to keep the lamp on 100% after the person has left the detection area.
- The daylight threshold can be set on DIP switches, to fit for particular application.
- This is the time period you would like to keep at the low light output level before it is completely switched off in the long absence of people. Note: 0 means on/off control; +∞ means 2 steps of dimming control, fixture never switch off.
- This is the dimmed low light output level you would like to have after the hold-time in the absence of people.



Infrared Sensor & Dimmer Option



Technical Data	
<ul style="list-style-type: none"> 120/277 VAC, 50/60Hz - Load @120 VAC 0-800W Ballast or Incandescent - Load @277 VAC 0-1200W Ballast 	<ul style="list-style-type: none"> Sensitivity: None, Low, Med, Max; Default Max Setpoint: None, 1-250 fc, Auto; Default 4 fc Ramp up time: None, 1-60 sec.; Default None
<ul style="list-style-type: none"> 230 VAC, 50Hz; Load 0-300W Ballast 	<ul style="list-style-type: none"> Fade Down Time: None, 1-60 sec.; Default None Operating Temperature: -40-167°F (-40-75°C) Operating Humidity: 20-90%
<ul style="list-style-type: none"> Relay Life Rating: 200,000 Cycles (120/277 VAC); 50,000 Cycles (230 VAC) 	<ul style="list-style-type: none"> Weight: 2.8 oz (80 grams) IP66, CE Compliant TUV, UL and cUL Listed Five Year Warranty
<ul style="list-style-type: none"> High Mode: 0-10 V; Default 10 V Low Mode: Off, 0-9.8 V; Default 1 V Time Delay: 30 Sec., 5-30 min.; Default 5 min. Cut Off Delay: None, 1-60 min. 1-5 hrs.; Default 1hr. 	

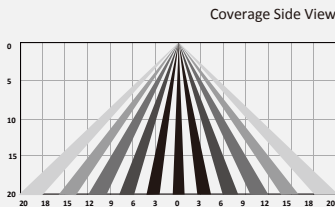
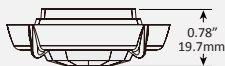
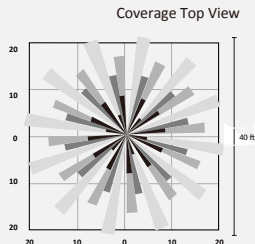
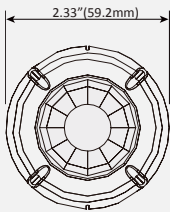
Coverage Pattern

Density and range of the coverage pattern is determined by the type of lens and mounting height

L3: 360° Coverage

L3 has a high density lens that covers a 40' diameter area at a height of 20'.

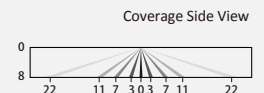
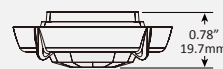
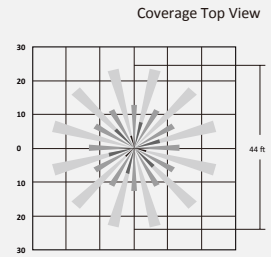
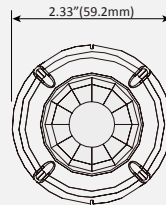
FSP-L3 High Density/Reduced Range Lens



L2: 360° Coverage

L2 lens provides a 44' diameter coverage area when mounted at a height of 8'.

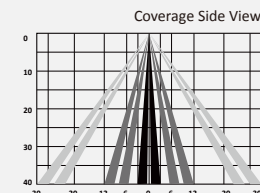
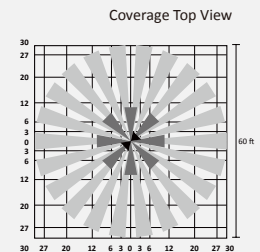
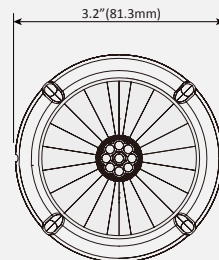
L2 Low Density/Wide Range Lens



L4: 360° Coverage

L4 is designed for mounting at heights between 30' to 40'. Its coverage area can be up to 60' in diameter when mounted at 40'.

L4 40 Foot High Bay Lens

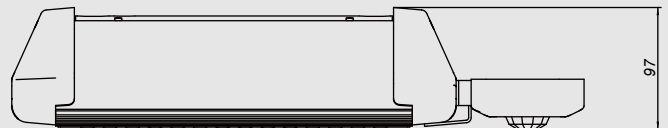
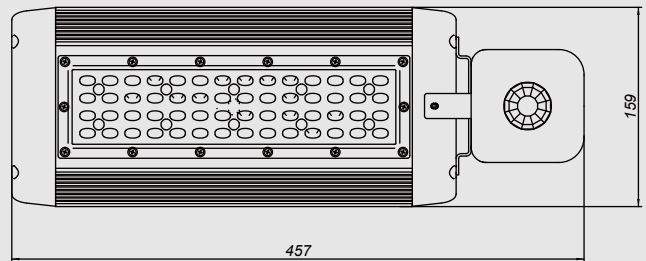


Setting

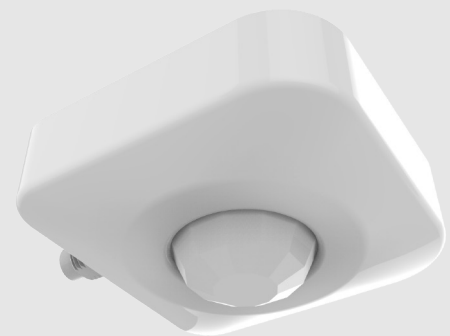
Refer to Dimmer&romotion operate instruction.

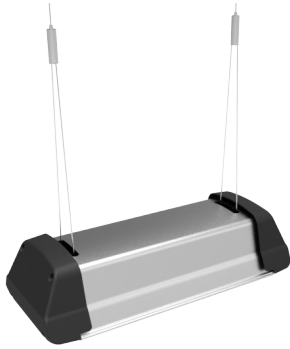


PIR Sensor Option

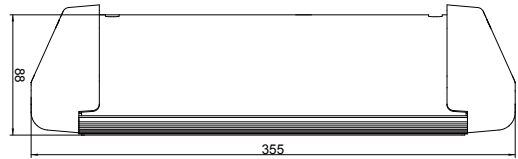
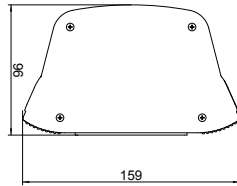


Input Voltage	AC 120-277 V, 60HZ
Load Requirement	800VA @ 120V AC Fluorescent Ballasts NO Min 1200VA @ 277V AC Fluorescent Ballasts NO Min
Load Horsepower	1/6HP
Time Delay Adjustment	Fixed 15 seconds to 30 minutes
Operating Temperature	32° to 131° F (0° to 55° C)
Humidity range	0%-90%RH, non-condensing
Coverage range	Up to 30 ft mounting / 360 Degrees
Terminal Line	Black-Hot, White-Neutral, Red-Load
Warranty	2 Years
IP Rating	IP 30
Sensor Type	IR Sensor

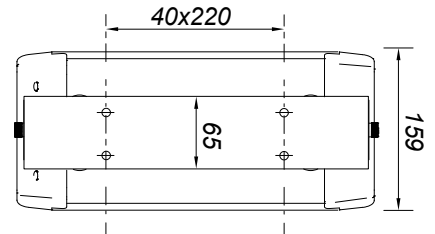
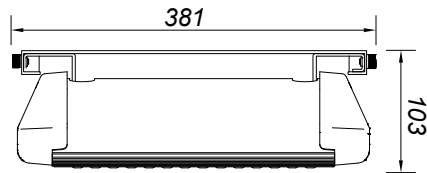




Chain Mount



Flat Surface Mount



Suspended Surface Mount

