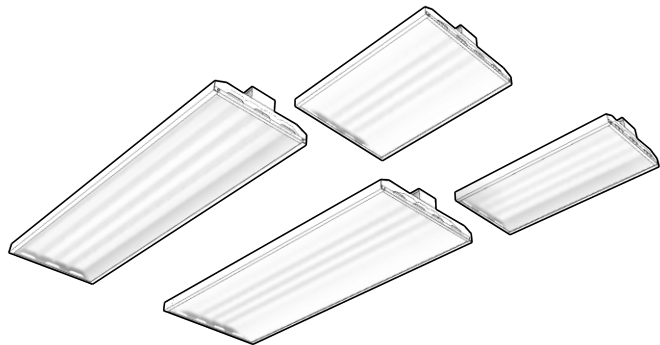


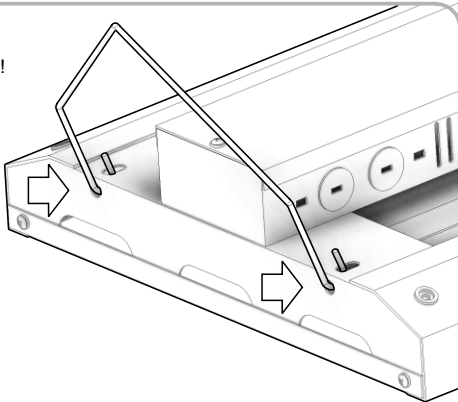
USHIBAYLxxxWPL Series LED Highbays

Installation Guide

CAUTION: PLEASE FOLLOW THIS INSTRUCTION MANUAL CAREFULLY TO PREVENT ANY INJURIES OR COMPLICATIONS THAT MAY ARISE.
WARNING: Before installing or maintaining the luminaire, make sure all power is **TURNED OFF**.
Verify that supply voltage is correct by comparing it with the label information on all fixtures.
Make all connections in accordance with the NEC requirements, and make sure all luminaries are properly secured to prevent any wire complications. This luminaire is to always be installed with the lens facing down and its not to exceed the maximum ambient temperature rating noted on the specification sheet.



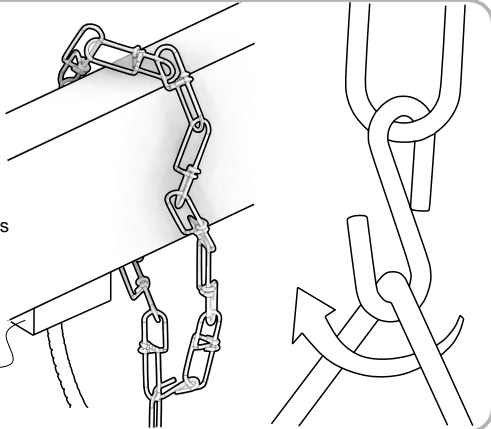
Step 1- Install the V Hook to! the fixture. All fixtures have [4] slot openings at the top (2 of each side), use the slotted holes to install the V Hook to the! luminaire.



Step 2- Wrap two pieces of chain (optional) across a ceiling beam and extend down to the required mounting height.

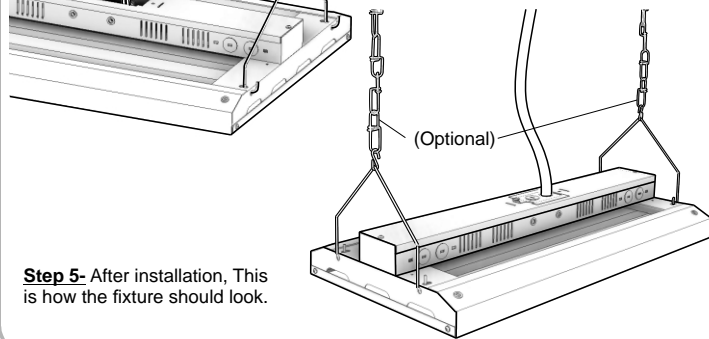
Step 3- Install a Junction Box (not included) on the ceiling beam and run down the AC Power Supply cables inside a flexible conduit to approximately the same height as the chains.

Junction Box for housing all wire connections



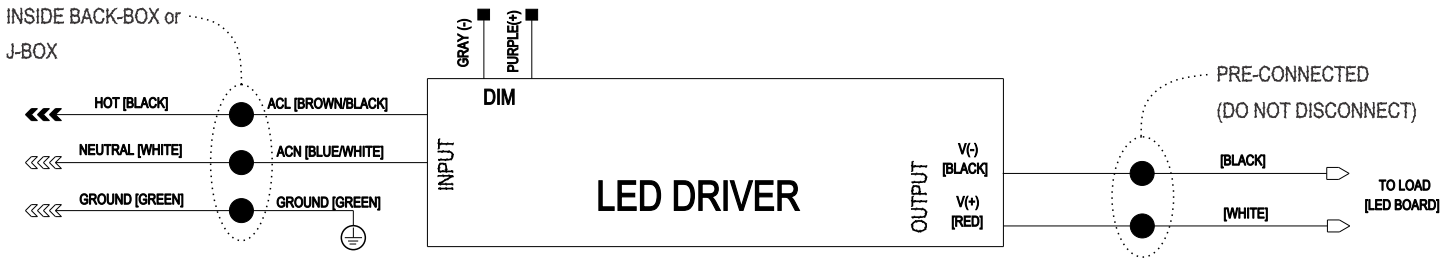
PART NO.	IMAGE	DESCRIPTION	QTY
FLHA-VH		V-Hook used to mount the Linear!High Bay to a variety of mounting options.	2
AC-LHA-CHN (not included)		40 in. chain pair used to hang the Linear High Bay on Various Mounting Beams.	1 (pair)

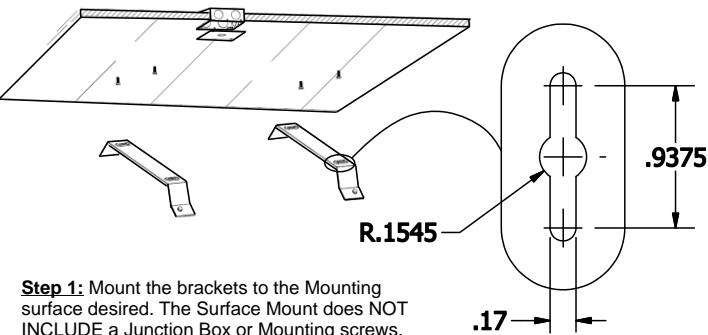
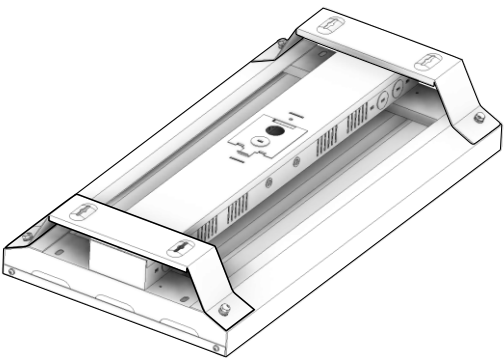
Step 4- Remove the cover plate in order to access wires required for installation. Have an AC Power Supply Conduit with a J-Box attached to the ceiling come down to approximately the same height of the chains. Use the Wiring Diagram provided above to properly wire the luminaire to the power supply. All wiring connections must be made either inside a Junction Box or the back housing of the luminaire.



Step 5- After installation, This is how the fixture should look.

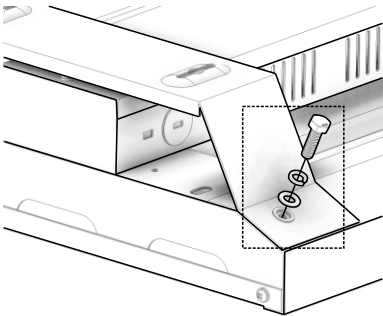
WIRING DIAGRAM: Connect the ACL and the ACN from the driver to the conduit with the AC Power Supply cords.Follow the Wiring Diagram provided.



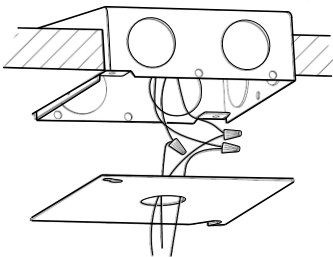


Step 1: Mount the brackets to the Mounting surface desired. The Surface Mount does NOT INCLUDE a Junction Box or Mounting screws. These will have to be provided by the customer. The following figure is a detail of the mounting holes on the bracket.

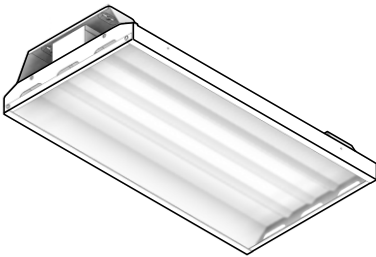
Step 2: Once the Mounting! Brackets are Installed onto! the surface and properly! secured. Use the two holes on the bottom slanted surface to! fasten the luminaire. This! is done by using the M6-1.0! bolt along with the lock-washer! and washer.



Step 3: After the luminaire! is properly secured into place, use! the Wiring Diagram to install the! luminaire to an AC Power Supply.! All connections must be made inside a J-Box. (J-Box not included)



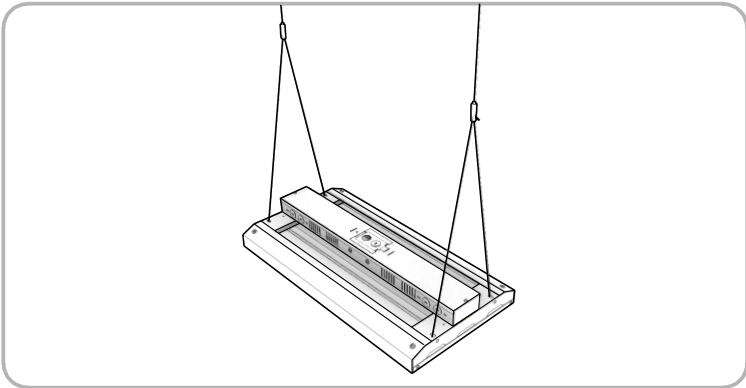
Step 4: Once the Mounting! Brackets are Installed onto! the surface and properly! secured. This is how the! luminaire should look.



Linear Highbay Surface Mount Kit

CAUTION: PLEASE FOLLOW THIS INSTRUCTION MANUAL CAREFULLY TO PREVENT ANY INJURIES OR COMPLICATIONS THAT MAY ARISE.
WARNING: Before installing or maintaining the luminaire, make sure all powers are **TURNED OFF**.
Verify that supply voltage is correct by comparing it with the label information on all fixtures.
Make all connections in accordance with the NEC requirements, and make sure all luminaires are properly secured to prevent any wire complications. This luminaire is to always be installed with the lens facing down and its not to exceed the maximum ambient temperature rating noted on the specification sheet.

PART NO.	IMAGE	DESCRIPTION	QTY
AC-LHA-SMS		Surface Mount Kit bracket for Linear High Bay AC-LHA-SMS: 090/110/178/223	2
AC-LHA-SML		Surface Mount Kit bracket for Linear High Bay AC-LHA-SMS: 162 or 321	2
10-00071		Hex Head M6-1.0 x 20 mm Long Bolt	4
10-00063		Washer for M6 Bolt	4
10-00065		Lock washer for M6 Bolt	4



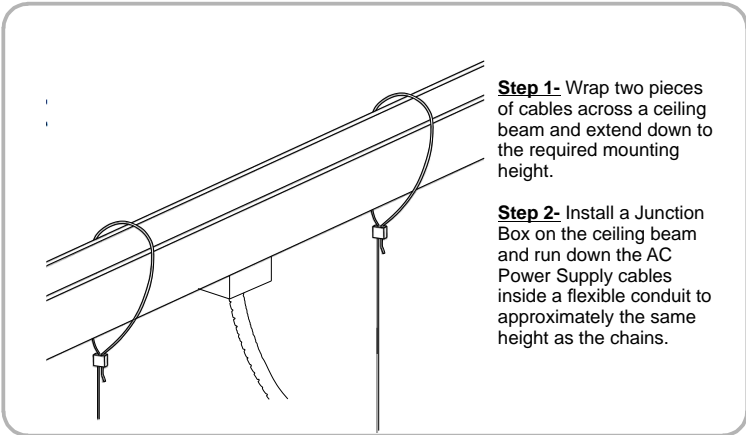
Linear Highbay Cable Mount Kit

CAUTION: PLEASE FOLLOW THIS INSTRUCTION MANUAL CAREFULLY TO PREVENT ANY INJURIES OR COMPLICATIONS THAT MAY ARISE.

WARNING: Before installing or maintaining the luminaire, make sure all power is **TURNED OFF**.

Verify that supply voltage is correct by comparing it with the label information on all fixtures.

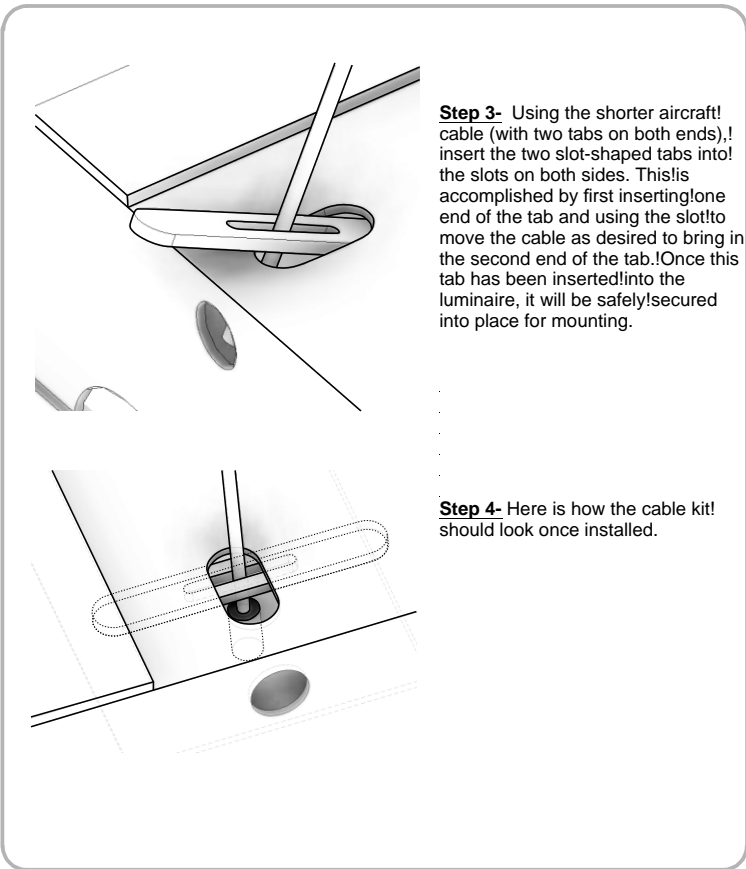
Make all connections in accordance with the NEC requirements, and make sure all luminaires are properly secured to prevent any wire complications. This luminaire is to always be installed with the lens facing down and its not to exceed the maximum ambient temperature rating noted on the specification sheet.



Step 1- Wrap two pieces of cables across a ceiling beam and extend down to the required mounting height.

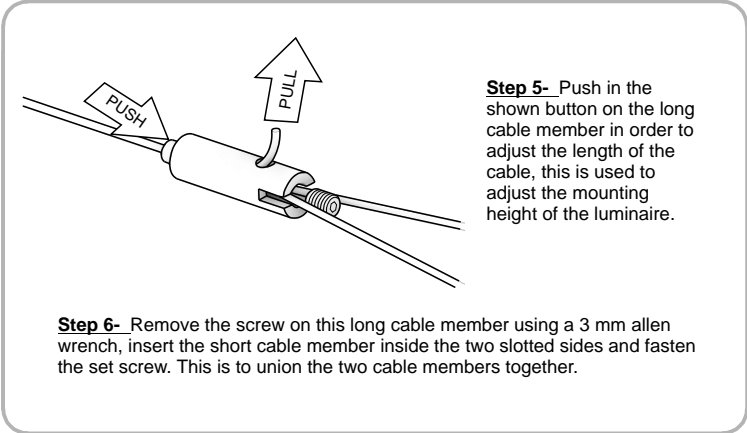
Step 2- Install a Junction Box on the ceiling beam and run down the AC Power Supply cables inside a flexible conduit to approximately the same height as the chains.

PART NO.	IMAGE	DESCRIPTION	QTY
AC-LHA-ACL		196 in. Aircraft Cable pair used to hang the FLHA Linear High Bay on Various Mounting Beams.	1 pair
AC-LHA-ACS		120 in. Aircraft Cable pair used to hang the FLHA Linear High Bay on Various Mounting Beams.	1 pair



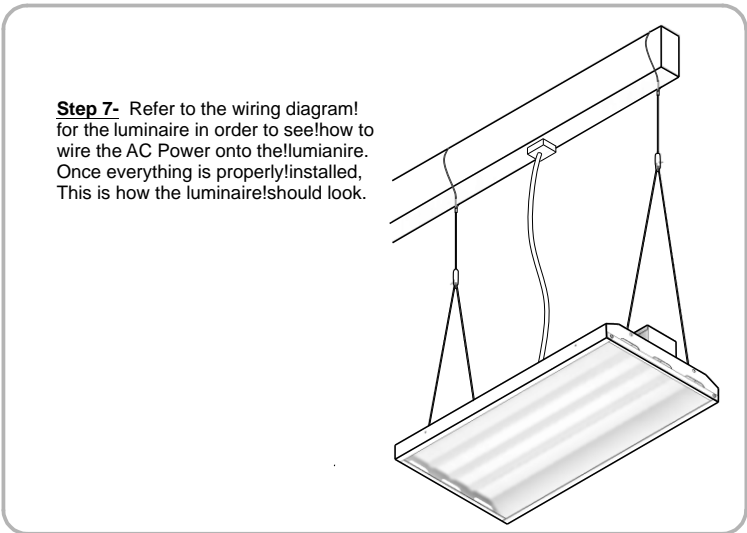
Step 3- Using the shorter aircraft cable (with two tabs on both ends), insert the two slot-shaped tabs into the slots on both sides. This is accomplished by first inserting one end of the tab and using the slot to move the cable as desired to bring in the second end of the tab. Once this tab has been inserted into the luminaire, it will be safely secured into place for mounting.

Step 4- Here is how the cable kit should look once installed.

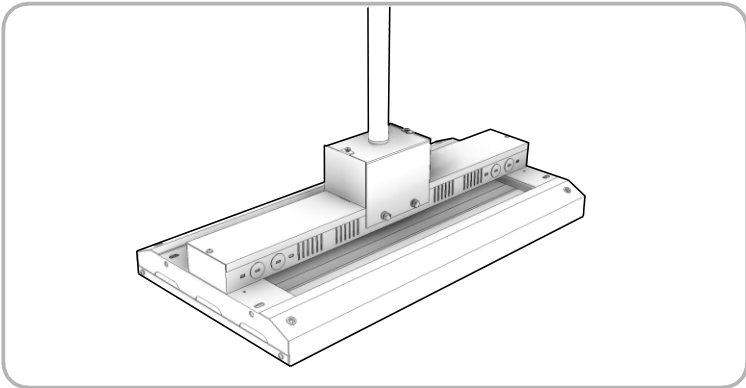


Step 5- Push in the shown button on the long cable member in order to adjust the length of the cable, this is used to adjust the mounting height of the luminaire.

Step 6- Remove the screw on this long cable member using a 3 mm allen wrench, insert the short cable member inside the two slotted sides and fasten the set screw. This is to union the two cable members together.

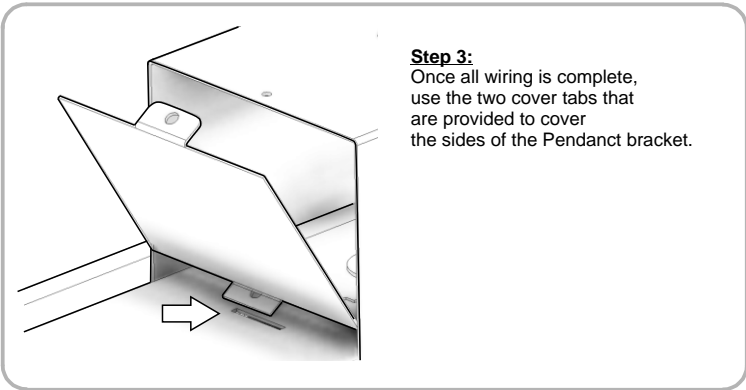
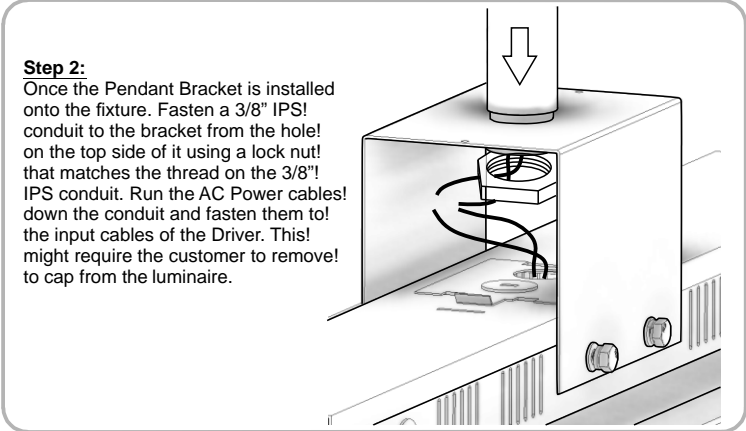
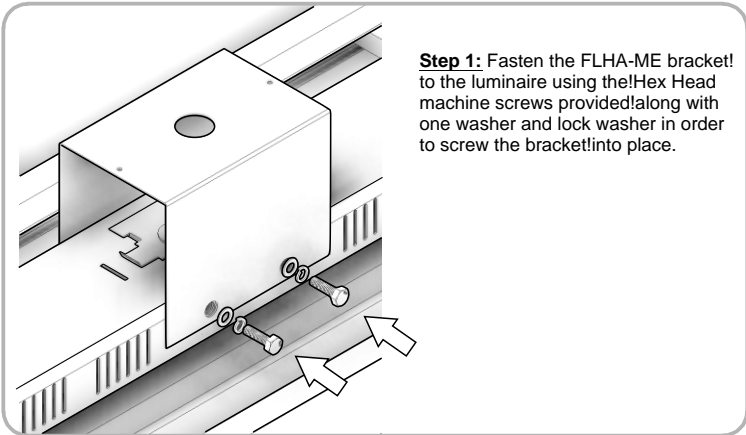


Step 7- Refer to the wiring diagram for the luminaire in order to see how to wire the AC Power onto the luminaire. Once everything is properly installed, This is how the luminaire should look.

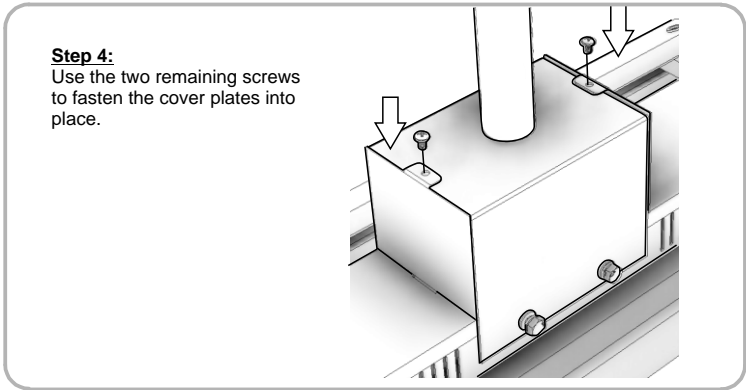


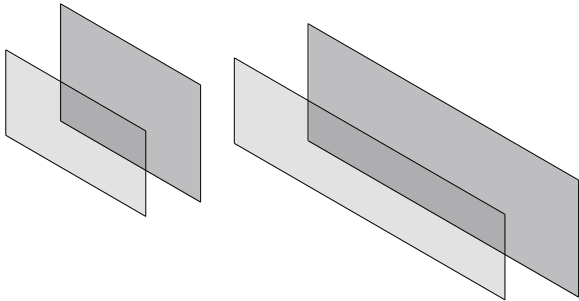
Linear Highbay Pendant Mount Kit

CAUTION: PLEASE FOLLOW THIS INSTRUCTION MANUAL CAREFULLY TO PREVENT ANY INJURIES OR COMPLICATIONS THAT MAY ARISE.
WARNING: Before installing or maintaining the luminaire, make sure all powers are **TURNED OFF**.
Verify that supply voltage is correct by comparing it with the label information on all fixtures.
Make all connections in accordance with the NEC requirements, and make sure all luminaries are properly secured to prevent any wire complications. This luminaire is to always be installed with the lens facing down and its not to exceed the maximum ambient temperature rating noted on the specification sheet.



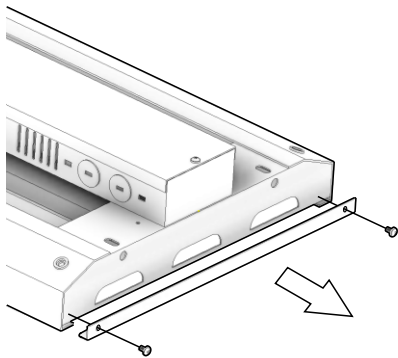
PART NO.	IMAGE	DESCRIPTION	QTY
AC-LHA-PEM		Pendant Mount Kit bracket for Linear High Bay	1
FLHA-ME-P		Cover Plate for the AC-LHA-PEM Pendant Mounting Kit.	2
10-00071		Hex Head Bolt	4
10-00026		Pan Head M4-0.7 x 6mm Long Screw	4
10-00063		Washer for M4 Screw	4
10-00065		Lock Washer for M4 Screw	4





Clear Lens

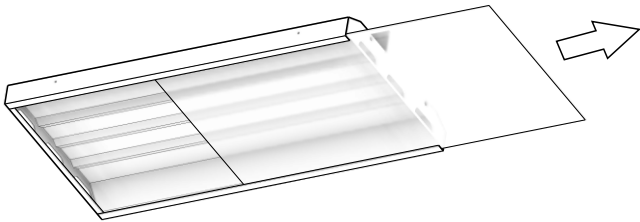
CAUTION: PLEASE FOLLOW THIS INSTRUCTION MANUAL CAREFULLY TO PREVENT ANY INJURIES OR COMPLICATIONS THAT MAY ARISE.
WARNING: Before installing or maintaining the luminary, make sure all powers are **TURNED OFF**.
Verify that supply voltage is correct by comparing it with the label information on all fixtures.
Make all connections in accordance with the NEC requirements, and make sure all luminaries are properly secured to prevent any wire complications. This luminary is to always be installed with the lens facing down and its not to exceed the maximum ambient temperature rating noted on the specification sheet.



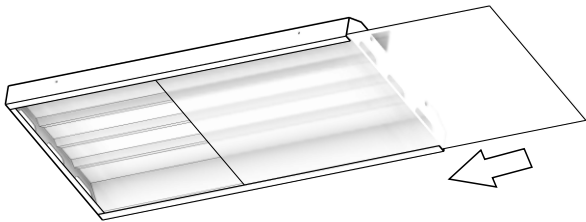
Step 1- Using a Phillips Screw Driver, remove the two screws from the side of the luminaire. After the two screws have been removed, place them down somewhere safe and remove the Side Angle from the fixture in order to access the default lens. It is important to not lose these screws because they will be used to fasten the luminaire back together once the new Clear Lens has been installed.

PART NO.	IMAGE	DESCRIPTION	QTY
AC-LHA-CL2S		Clear Lens for USHIBAYL90WPL USHIBAYL110WPL	1
AC-LHA-CL2L		Clear Lens for USHIBAYL162WPL	1
AC-LHA-CL4S		Clear Lens for USHIBAYL178WPL USHIBAYL223WPL	1
AC-LHA-CL4L		Clear Lens for USHIBAYL321WPL	1

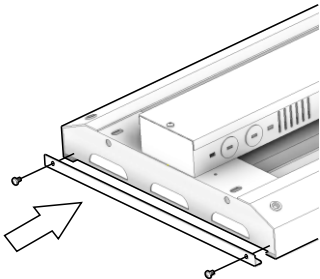
Step 2- Slide out the default lens.

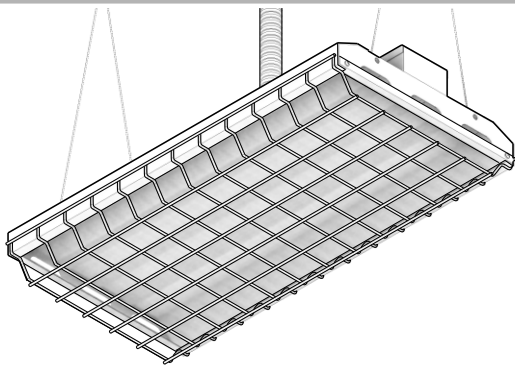


Step 3- Slide in the New Clear lens.

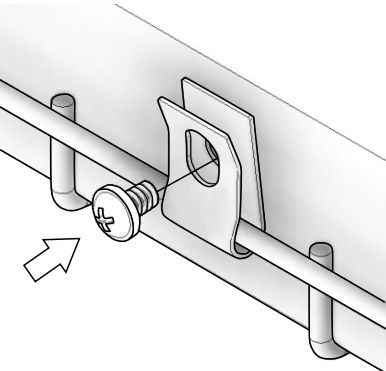
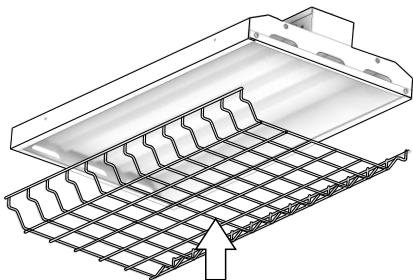


Step 4- Once the new lens has been installed, place the side angle back into place and fasten it back using the same screws used in Step 1.

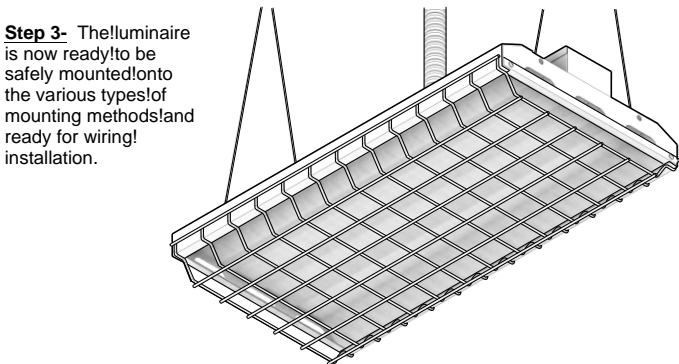




Step 1- The luminaires are made in various sizes. It is important to make sure that the wire guard is the corresponding size based on the luminaire chosen.



Step 2- Use the four [4] formed tabs to fasten the wire guard onto the light fixture. This is done by using the 4 holes located on the side parts of the luminaire.



Step 3- The luminaire is now ready to be safely mounted onto the various types of mounting methods and ready for wiring installation.

Linear Highbay Wire Guard Kit

CAUTION: PLEASE FOLLOW THIS INSTRUCTION MANUAL CAREFULLY TO PREVENT ANY INJURIES OR COMPLICATIONS THAT MAY ARISE.
WARNING: Before installing or maintaining the luminary, make sure all powers are **TURNED OFF**.
Verify that supply voltage is correct by comparing it with the label information on all fixtures.
Make all connections in accordance with the NEC requirements, and make sure all luminaries are properly secured to prevent any wire complications. This luminary is to always be installed with the lens facing down and its not to exceed the maximum ambient temperature rating noted on the specification sheet.

PART NO.	IMAGE	DESCRIPTION	QTY
AC-LHA-WG2S		Wire guard for: USHIBAYL90WPL USHIBAYL110WPL	1
AC-LHA-WG2L		Wire guard for: USHIBAYL162WPL	1
AC-LHA-WG4S		Wire guard for: USHIBAYL178WPL USHIBAYL223WPL	1
AC-LHA-WG4L		Wire guard for: USHIBAYL321WPL	1
FLHA-MC-CLIP		Metal clips used to fasten the wire guard onto the luminaire.	4
10-00072		Pan Head #6 Self tapping sheet metal screw	4