

LED FOOD LIGHT

FEATURES

- Sleek, modern look, easy to clean
- IP68 enclosure withstand wash-downs with water jets. Water sheds right off the smooth dome design.
- With no exposed screws, there are no recesses for bacteria to grow in.
- Polycarbonate lens is a safer, lighter weight alternative to glass, while its high transmittance properties make it appear crystal clear. The lens provides a 120 ° beam angle; accessory lenses are available to achieve other angles.

OPTICAL SYSTEM

- Symmetrical distribution directs uniform light output through a specially designed optic lens.
- Optical systems maintain an IP68 rating.
- Available in 3000K, 4000K, 5000K, 5700K, 6500K CCT.
- Efficacy 140lm/W as standard, higher lumen output, precision light pattern ensure more energy saved.
- Minimum CRI of 80 and 90 optional.

ELECTRICAL

- 0-10V/ PWM/ Timer dimming, 3 timer modes, dim-to-off with standby power $\leq 0.5W$
- High-performance driver features over-voltage, under voltage, short-circuit and over temperature protection.
- Standard universal voltage: 100-277Vac, Input 50-60Hz.
- Total harmonic distortion: $<20\%$
- Operating temperature: $-20^{\circ}C \sim +40^{\circ}C$ ($-104^{\circ}F$ to $113^{\circ}F$)
- Power factor > 0.9
- High-efficacy LEDs with integrated circuit board mount to the housing to maximize heat dissipation and promote long life.

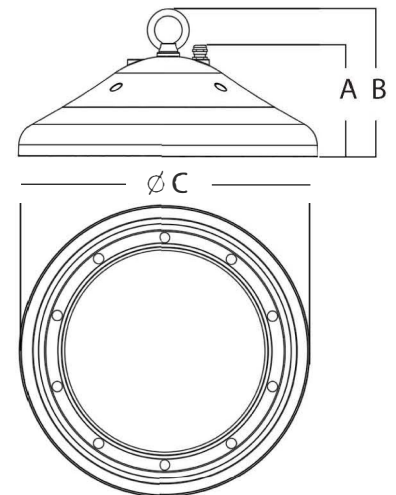
LISTINGS/CERTIFICATES

- Tested by UL authorized lab in accordance with IESNA LM-79 & LM-80.
- Listed to UL 1598 and UL 8750, UL File number: E497331.
- FCC certified.
- DLC Premium qualified, eligible for rebates.
- Suitable for wet locations.
- NSF certificate

up to 180lm/w



FIXTURE DIMENSION



A	B	C
15.6cm/6.15"	20.8cm/8.15"	42.2cm/16.6"

Wattage	Voltage	Mounting	Kelvin	CRI	Efficacy	Beam Angle	Finish
96W 145W	100-277V	Eye Bolt Hook Mount Pendant Mount	3000K 4000K 5000K 5700K 6500K	80CRI 90CRI	130-140lm/w 150-160lm/w 170-180lm/w	120°	White

TECHNICAL SPECIFICATIONS

MODEL	WATTS	INITIAL DELIVERED LUMENS	Replace MHL	IP & IK	FIXTURE DIMENSION	NW	Maximum Current
USNSFHB96WIVAOK	96W	13440lm	250W	IP68&IK08	Φ16.6*6.15 *8.15" (Φ42.2*15.6*20.8cm)	13.6lbs (6.2kg)	0.96A
USNSFHB145WIVAOK	145W	20300lm	400W	IP68&IK08	Φ16.6*6.15 *8.15" (Φ42.2*15.6*20.8cm)	14.7lbs (6.7kg)	1.45A



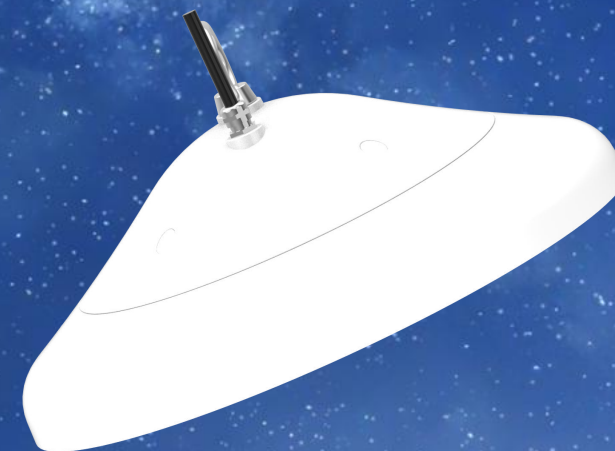
WARRANTY

5-year standard warranty, 10-year warranty optional.

Food Service High Bay



Widely used in food processing factory/ slaughter house



**USAVE
LED**

COMMERCIAL LED EXPERTS

Main Features

Product Description

1. Power : **96W 145W**
2. LED chips: **SMD 2835 chips**
3. Luminous efficacy : **Up to 180lm/w**
4. Driver : **Meanwell XLG (100-277VAC)**
5. **Ra80/90** optional; **2700-6500K** optional;
6. Optics: **120 degree ; IP69K & IK08**
7. Working temperature: **-20-40 degree**
8. Certificates: **NSF UL DLC CE SAA**
9. Warranty: **5 years** standard, **10 years** for option.
10. Standard housing: White; Power cord: 50cm



COMMERCIAL LED EXPERTS

Application

Food processing plant, poultry processing plant etc.



Superb Performance

➤ Lower UGR, Ra80/90 option

UGR: 16-22, provide more uniform and comfortable lights, restore the real color of foods.
Ra>80 more vividly restoring food color.

➤ High light efficiency

Using 385pcs led chips for one light, 135lm/w and 180lm/w two version for option.

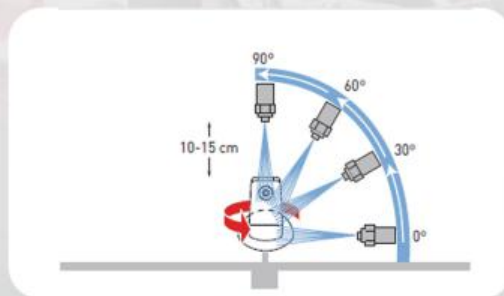
➤ Smart elegant design

Appearance lines are smooth & fashion, like a wax apple/bamboo hat, not only it can helps to take away the heat from the lamp body but also easy for cleaning.

➤ IP69K



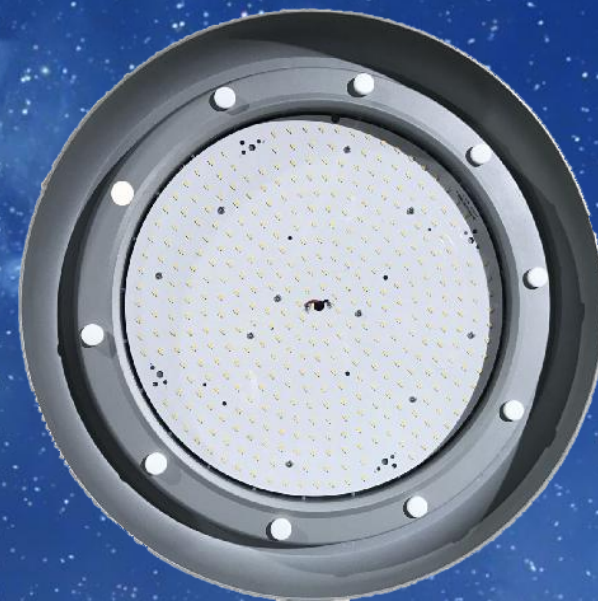
> Diagram of protection rating testing IP69K



> High-pressure cleaning of housing cover with 100 bar

HIGH PROTECTION RATING IP69K AND RESISTANCE AGAINST CLEANING AGENTS

The high protection rating of the luminaries allows cleaning at high pressure up to 100 bar and with up to 80°C hot water and a variety of cleaning agents, alongside good chemical resistance.



USAVE
LED

COMMERCIAL LED EXPERTS

Material Superiority

How can our food lights meet the stringent requirements of NSF certificates?

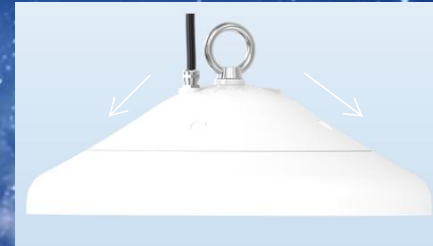
- ✓ The fire-protection rating of the PC lens is 94V0, lighting the lens 15 minutes continually is no problems.
- ✓ Tight food grade silicone plug & screw rubber stopper, preventing bacterial growth.
- ✓ The SOOW wire, especially suitable for underwater light fixture
- ✓ The light with anti-static and dust-proof function under the surface powder treatment.
- ✓ No exposed screw, no glass, meet the requirement in food processing factory.



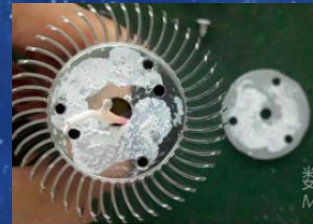
All material are not only superiority for food light, but also can resist the impact of water cannons helping the light keep a good performance during working.

Great Heat Dissipation System

→ The smooth appearance die-casting Aluminum housing ensure a better heat dissipation for the light.



→ Using graphite plate under the PCB board conduct the heat from the light, the graphite can last forever and the thermal conductivity is higher.



Traditional Thermal Conductivity 0.3-8W//m·k



Flake Graphite

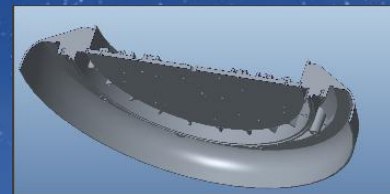


Vertical Thermal Conductivity :5-30W/m·k,
Horizontal Thermal Conductivity 150-1500W/m·k

→ Heat sinks are inside the driver cover, increasing the heat dissipation area & helping the light conduct the heat from upside.



→ Inner hollowed out design enhance the heat dissipation effect.



**USAVE
LED**

COMMERCIAL LED EXPERTS

Installation, Cleaning & Maintenance

Installation

The light is with a hook as standard, which is very easy to install.
We also could offer chain & rod installation method etc if clients need.



Maintenance

Removable driver cover, easy to dismantle and assemble for installation

Cleaning

Keeping lights tidy is very important for food processing light.
IP69K makes the lights very conveniently & fastly to be cleaned directly by water jet.



COMMERCIAL LED EXPERTS