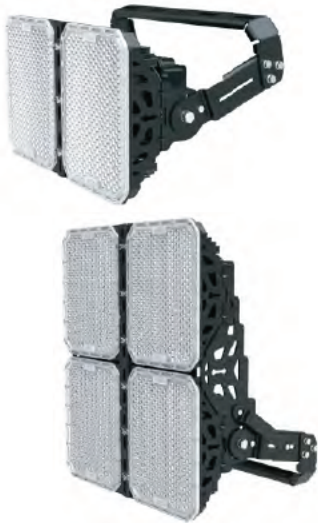




COMMERCIAL LED EXPERTS



OVERVIEW

USSFLSxxxWPL LED Architectural Flood Lights are the ultimate design tool for transforming buildings and outdoor spaces into works of art. The series is offered in wide and spot optical distributions to suit an array of applications including wall washing, flags and signage, statues, monuments, and large areas. It provides a high intensity output along with the efficiency and cost effectiveness of LED technology.

FEATURES

- Limited Warranty: 5 Years
- Efficacy: up to 136 LPW
- Lumen Output: 51,000 135,000 L
- Wattage: 400 1,000 W



Models

Model	Watts(W)	Lumens (LM)	Efficacy (LPW)
USSFLS400WPL	400	52,900	134
USSFLS500WPL	500	69,100	134
USSFLS800WPL	800	107,000	135
USSFLS1000WPL	1000	135,000	136

*Lumen Output based on 277V models at 5700K. Also available in Color Temperatures of 3000K, 4000K, and 5000K.

Technical Specifications

Warranty

uSaveLED warrants these LED products will be free from defects in materials and workmanship for a period of five (5) years from the date of delivery to the end user, including coverage of light output, color stability, driver performance and fixture finish. Please refer to our full warranty.

Qualifications

UL Listing:

File# E473037. Suitable for Wet Locations

IESNA LM79 & LM-80 Testing:

LED luminaires have been tested by an independent laboratory in accordance with IESNA LM-79 and LM-80.

DLC Qualification:

Selected models of this product are on the Design Lights Consortium (DLC) Qualified Products List and are eligible for rebates from DLC Member Utilities. To view our DLC qualified products, please consult the DLC Qualified Products List at www.designlights.org/qpl

Construction

IP Rating:

Ingress Protection rating of IP65 for dust and water

Ambient Temperature:

Suitable for up to 131°F (55°C) ambient temperature

Cold Weather Starting:

The minimum starting temperature is -40°F/-40°C

Thermal Management:

Superior thermal management with external Air-Flow fins.

Housing:

Aluminum housing with powder coating.

Mounting Methods:

Heavy-duty Trunion Mount included. Slipfitter mounting option available.

Lens:

Polycarbonate

Gaskets:

Silicon Gaskets

Finish:

Our environmentally friendly polyester powder coating are formulated from high-durability and long-lasting color, and contains no VOC or toxic heavy metals.

Light Beam Angle:

30°, 50° or 100°

Electrical

Drivers:

100-277V, 50-60 Hz. Optional 277-480v.

Power Factor > 95%

1-10v dimming

20kv surge protector preinstalled.

Easy-connect junction box included.

LED Characteristics

Lifespan:

100,000- hour LED lifespan based on IES LM-80 results and TM-21 calculations.

LEDs:

Multi-chip, high-output, long-life LEDs

Color Temp:

3000K, 4000K, 5000K, 5700K

Color Stability:

LED color temperature is warranted to shift no more than 200K in CCT over a 5 year period

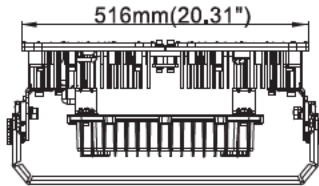
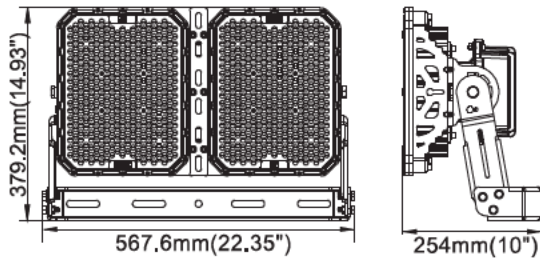
Color Uniformity:

Range of CCT (Correlated Color Temperature) follows the guidelines of th American National Standard for Specifications for the Chromaticity of Solid State Lighting (SSL) Products, ANSI C78.377-2011

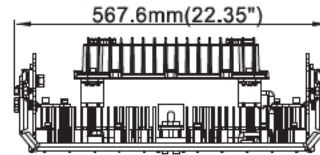
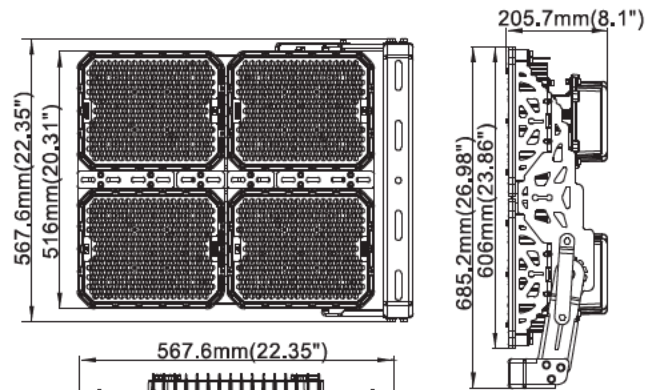
Color Rendering Index:

>70

Dimensions



400W
500W

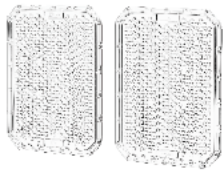


800W
1000W

Illuminance at Distance

400W (50° Lens)			500W (50° Lens)			800W (50° Lens)			1000W (50° Lens)		
Distance	Center Beam	Beam Width/Length	Distance	Center Beam	Beam Width/Length	Distance	Center Beam	Beam Width/Length	Distance	Center Beam	Beam Width/Length
30 ft	95.92 fc	24.5 ft	30 ft	117.97 fc	24.6 ft	30 ft	199.08 fc	23.7 ft	30 ft	249.99 fc	23.6 ft
60 ft	23.98 fc	49.0 ft	60 ft	29.49 fc	49.2 ft	60 ft	49.77 fc	47.4 ft	60 ft	62.50 fc	47.2 ft
90 ft	10.66 fc	73.5 ft	90 ft	13.11 fc	73.8 ft	90 ft	22.12 fc	71.1 ft	90 ft	27.78 fc	70.8 ft
120 ft	5.99 fc	98.0 ft	120 ft	7.37 fc	98.3 ft	120 ft	12.44 fc	94.8 ft	120 ft	15.62 fc	94.3 ft
150 ft	3.84 fc	122.5ft	150 ft	4.72 fc	122.9 ft	150 ft	7.96 fc	118.5 ft	150 ft	10.00 fc	117.9 ft

400W (30° Lens)			500W (30° Lens)			800W (30° Lens)			1000W (30° Lens)		
Distance	Center Beam	Beam Width/Length	Distance	Center Beam	Beam Width/Length	Distance	Center Beam	Beam Width/Length	Distance	Center Beam	Beam Width/Length
30 ft	185.27 fc	15.5 ft	30 ft	225.68 fc	15.5 ft	30 ft	401.01 fc	14.6 ft	30 ft	501.64 fc	14.6 ft
60 ft	46.23 fc	31.1 ft	60 ft	56.42 fc	31.1 ft	60 ft	100.25 fc	29.2 ft	60 ft	125.41 fc	29.2 ft
90 ft	20.59 fc	46.6 ft	90 ft	25.08 fc	46.6 ft	90 ft	44.56 fc	43.8 ft	90 ft	55.74 fc	43.9 ft
120 ft	11.58 fc	62.2 ft	120 ft	14.11 fc	62.2 ft	120 ft	25.06 fc	58.4 ft	120 ft	31.35 fc	58.5 ft
150 ft	7.41 fc	77.7 ft	150 ft	9.03 fc	77.7 ft	150 ft	16.04 fc	73.0 ft	150 ft	20.07 fc	73.1 ft



Optional Optical Lens

30° Beam Lens 100° Beam Lens
400W/500W (requires 2 lens per fixture)
800W/1000W (requires 4 lens per fixture)



Optional Laser Precision Aiming Device

Laser Device to be mounted to the flood lights for long distance precision aiming.



Optional Slip Fitter mount for 400W/500W only.

Slipfitter for mounting 400W/500W to a standard 2 3/8 inch pole.



Optional Glare Shield.

Fits all models

