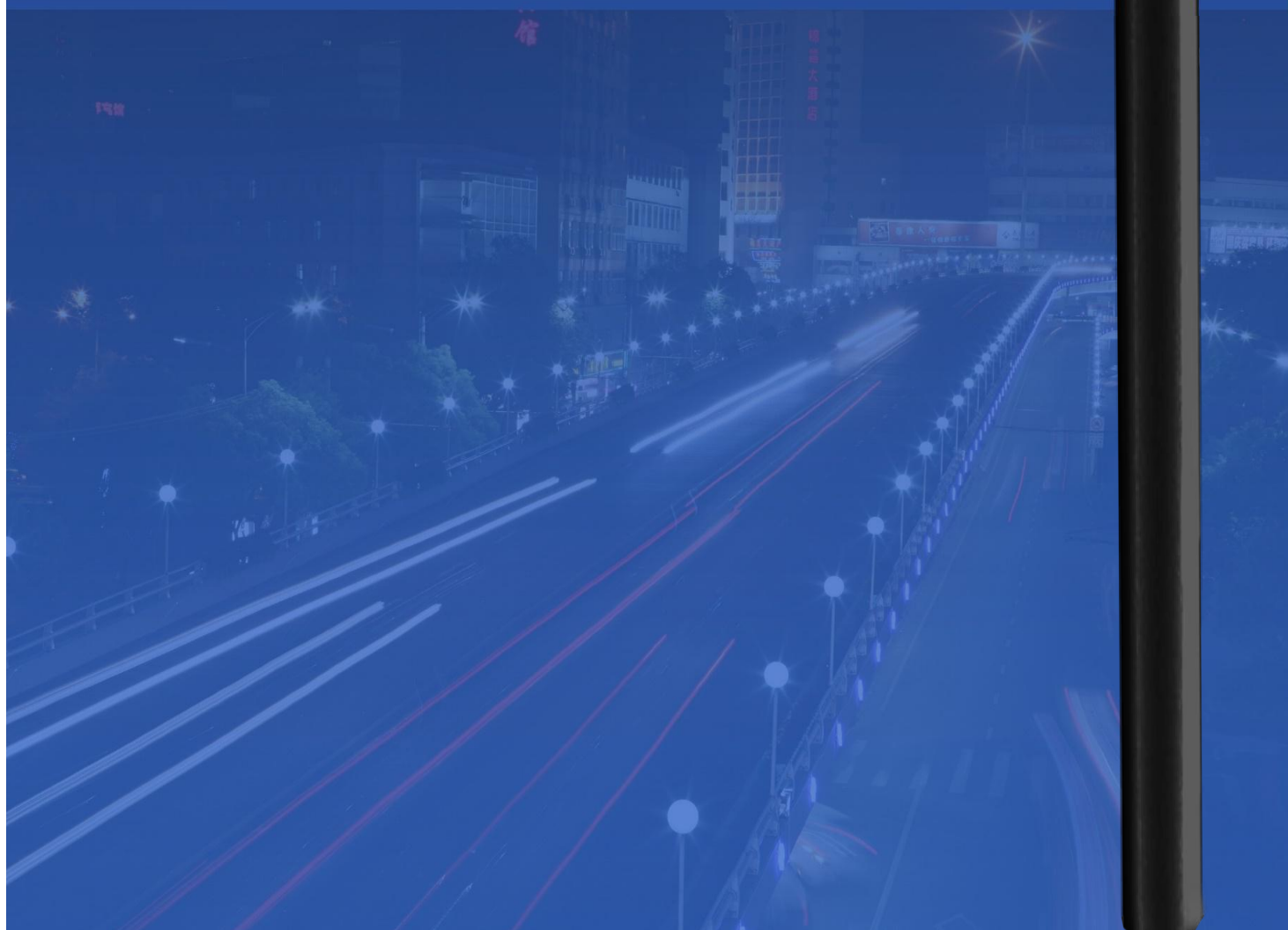




**USSLxxxWILAOK**



**Street & Parking Light**



## Superb Design

In combination of years experience in street and parking lot lighting, the USSLxxxWILAOK Series street & parking light was born. This new series is the result of a multi-disciplinary design study and it applies the latest technologies. The product's reliability and performance are the priority factors to be considered and they are verified and tested by AOK's professional qualified and constantly updated for Quality Assurance.

Our Qualified Engineers follow the R&D step by step: from optical to mechanical and electronic design and monitor the development of LED technology constantly investing in it. The USSLxxxWILAOK series street light equipped with the latest universal LED modules, delivering superb performance of LED Lighting and high reliability.

### Reliable LED Lighting Technology

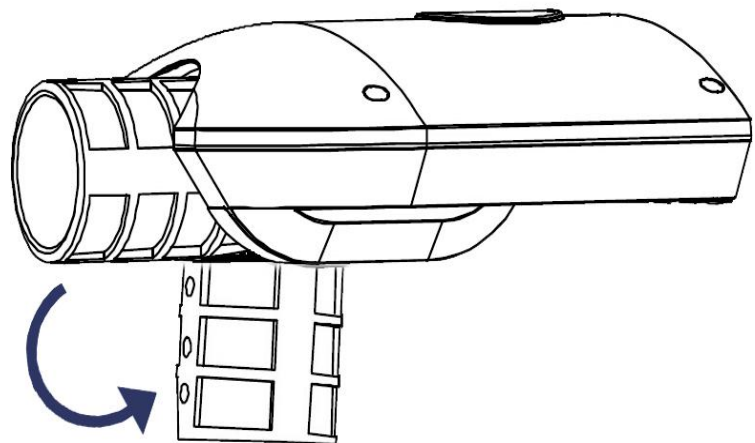
The special Reliable LED Lighting Technology provides significant advantages in terms of luminous efficiency, minimizing losses refraction and reflection inside the optical system. This system ensures a lower density of dirt and maintaining the luminaire performance for a very long period.

### LED Source Protection

As the key to guarantee the total life span of the luminaire, the protection of the LED source is the core topic in the designing of USSLxxxWILAOK luminaires. The carefully selected Mitsubishi PC cover and waterproof rubber ring ensured total IP rating of the whole product. And it also protects the LED chips from external agents and impacts.

### 0-90° Bracket Adjustment

The angles of the bracket of USSLxxxWILAOK street light can be adjusted from 0 to 90 degrees to fit with different styles of poles.



0-90° adjustment

## Temperature Control

USSLxxxWILAOK street light is designed with superb heat radiation technique. The heat and air can go through the whole luminaire via the gaps between the modules. This product also has a self-clean ability. When the rain came, the fixture will be washed and the dirt automatically goes out.

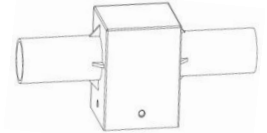
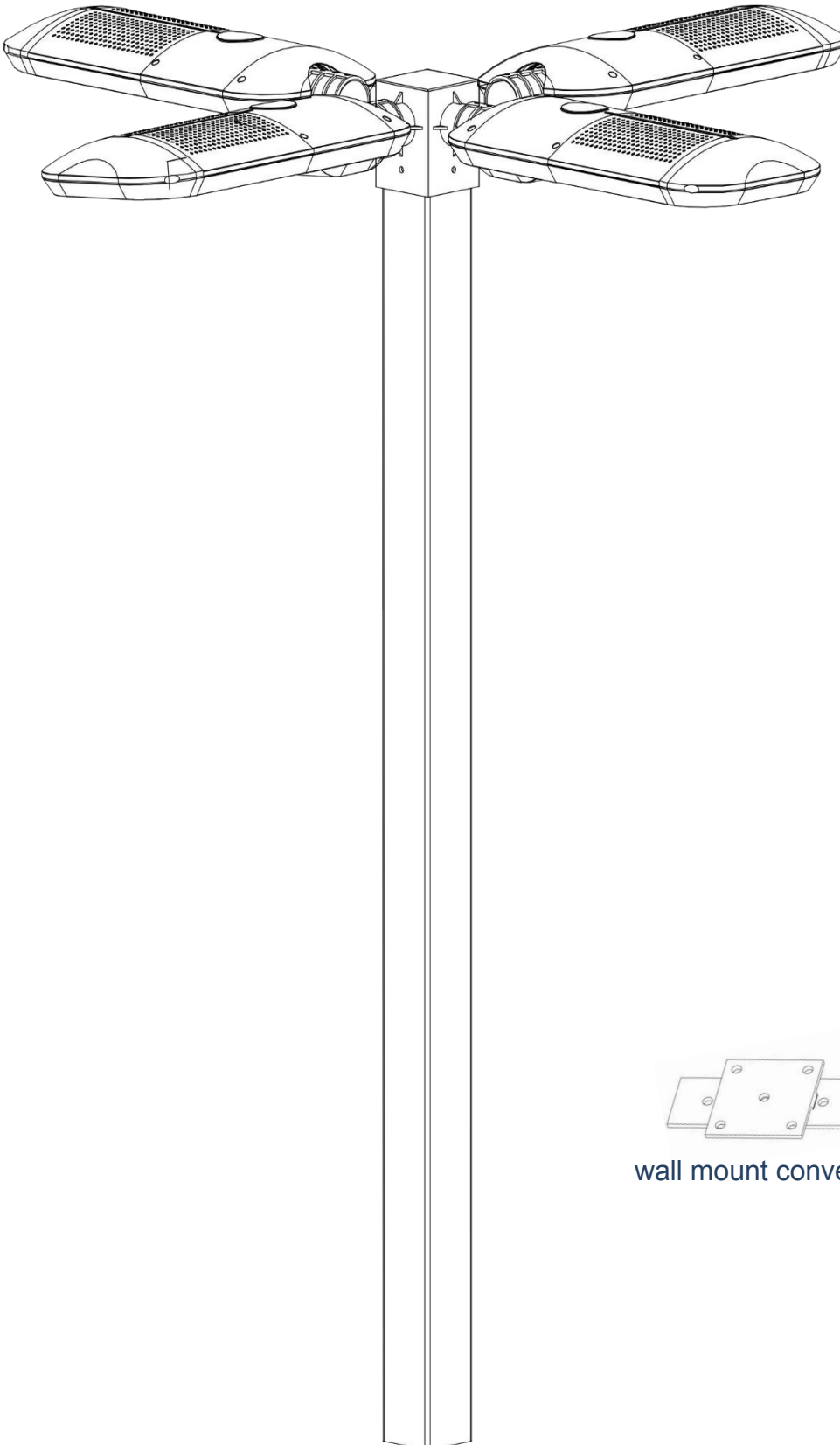
By the excellent heat radiation ability, **the temperature rising of USSLxxxWILAOK street light is only <26 °C**. And the lamp can work in the environment from -40 °C to 50 °C. If the environment is 40 °C, the maximize temperature on the lamp is 66 °C. But the Philips Luxeon T chips can afford 110 °C. This ensures the long life span and performance of the whole luminaire.



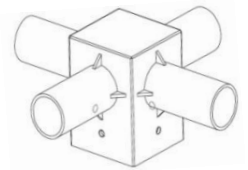
## Diversified Installation Methods

The USSLxxxWILAOK street light is suitable for all the installation methods. Its standard bracket angle can be adjusted from 0-90 degrees. And it can be installed on the square-shape pole as well by simply adding an extra converter.

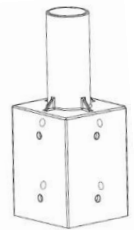
The standard bracket of USSLxxxWILAOK street light is based on 60mm round spigot. There are many different bracket converters prepared for USSLxxxWILAOK street light, such as round to square, 60-40mm, 60-80mm, etc.



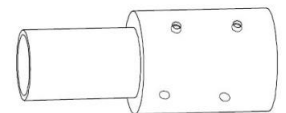
2 in 1 converter



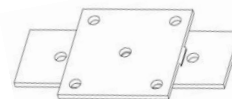
4 in 1 converter



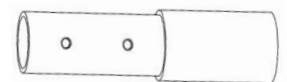
Round to square converter



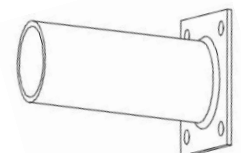
80-60mm converter



wall mount converter



60-40mm converter



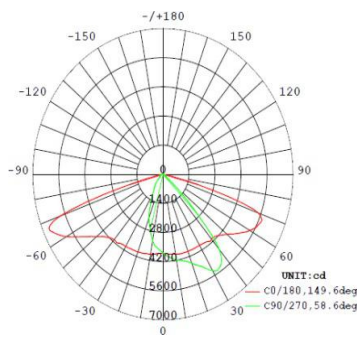
60mm to wall mount converter



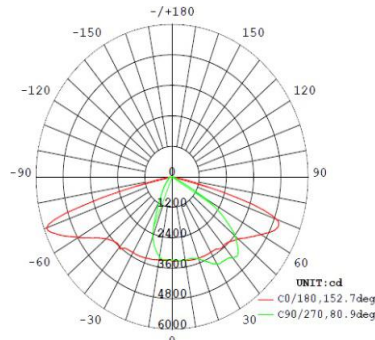
# Multiple Light Distribution Options

Street light & parking light should fit with a widely range of applications. Such as highway, express way, road, avenue, walking path or parking lot. Thus, uSaveLED provides different lens for the USSLxxxWILAOK Series street light to achieve different light distributions.

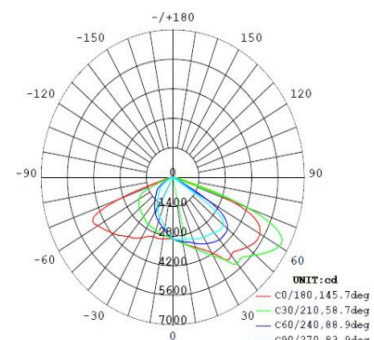
USSLxxxWILAOK follows the North American IESNA standard in providing the optional lens with Type II and Type III. The Type II lens is suitable for the highway with 2 lanes, Type III A is for 3 lanes and Type III B is for even wider road. uSaveLED selects the most suitable lens for its customer according to the detailed parameters project by project.



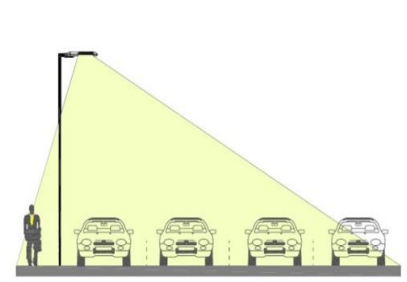
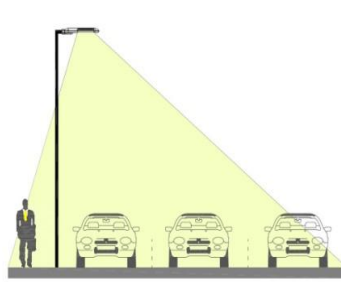
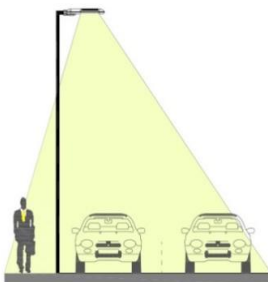
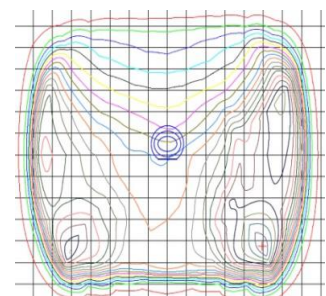
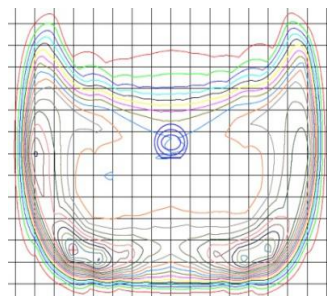
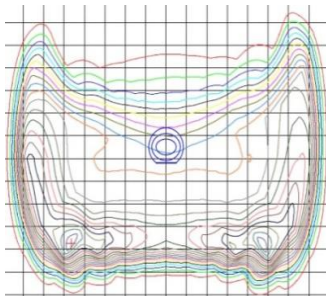
**Type II: 60\*150**



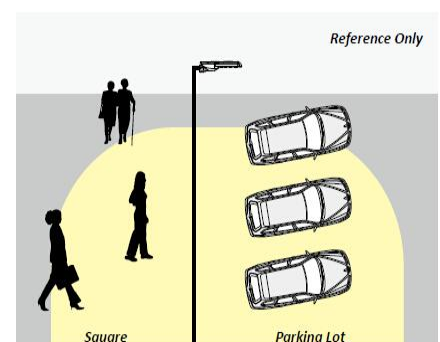
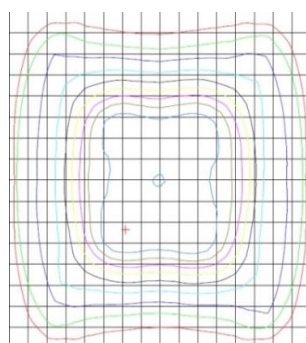
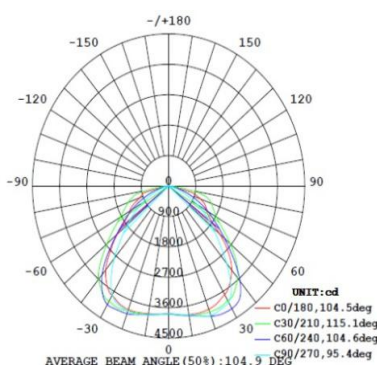
**Type III A: 70\*150**



**Type III B: 80\*150 degrees**



## 90\*100 degrees lens for parking Lot





# USSL40WILAOK

LED Street & Parking Light, 80-100W HID Replacement



New



Photocell

Black / white / silver / bronze color housing optional  
1-10V / PWM / Resistance dimming optional

## Specifications

### Electrical Specifications

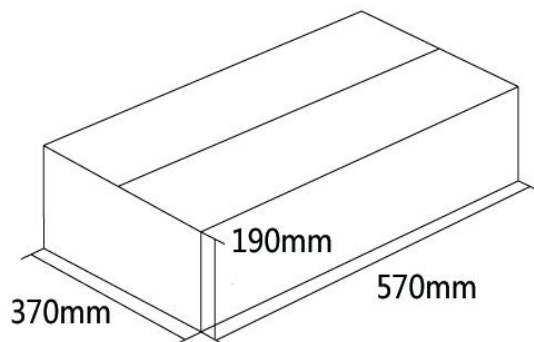
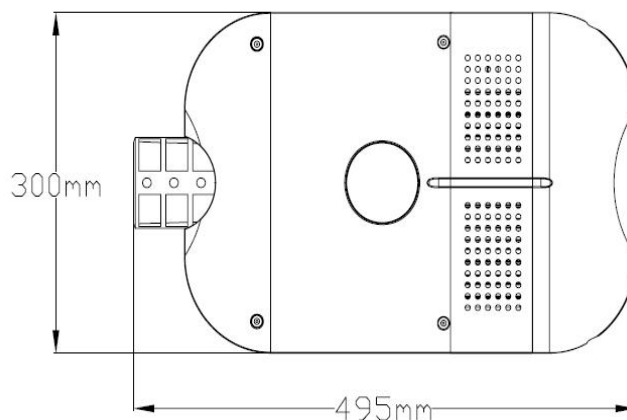
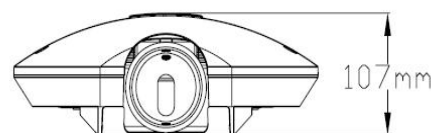
Model No.	USSL40WILAOK
Nominal Wattage	40W
Nominal Voltage	100-277/277-480VAC, 50/60Hz 12/24VDC
Maximum Current	AC 0.45A (max) DC 3.34A (max)
Power Factor (PF)	>0.95
Driver Efficiency	>90%

### Photometric Specifications

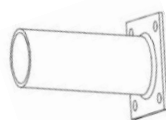
Luminous Flux	+Lumen tolerance +/- 5% 4,000-4,400lm
CRI	Ra>70(80 Optional)
CCT	3000/4000/5000/5700/6500K
Optional Beam Angle	60°*150° / 70°*150° / 80°*150° / 90°*100° / 60° / 120°

### Mechanical Specifications

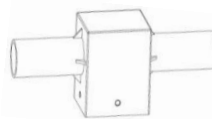
IP&IK Rating	IP66 & IK10
Lifetime	62000 hours - L70, @25°C
Heat Radiator	Anodized Aluminum
Lens	PC
Fixture Dimension	495*300*107mm 19.5*11.8*4.2 inches
Net Weight	5.5kg
Carton Dimension	570*370*190mm
Gross Weight	6.7kg



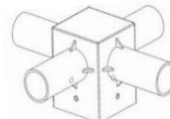
### Optional converters for different applications



60mm to wall mount converter



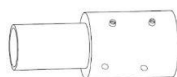
2 in 1 converter



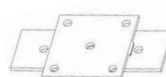
4 in 1 converter



Round to square converter



80-60mm converter



wall mount converter



60-40mm converter



# USSL80WILAOK

LED Street & Parking Light, 160-200W HID Replacement



New



Photocell



Black / white / silver / bronze color housing optional  
1-10V / PWM / Resistance dimming optional

## Specifications

### Electrical Specifications

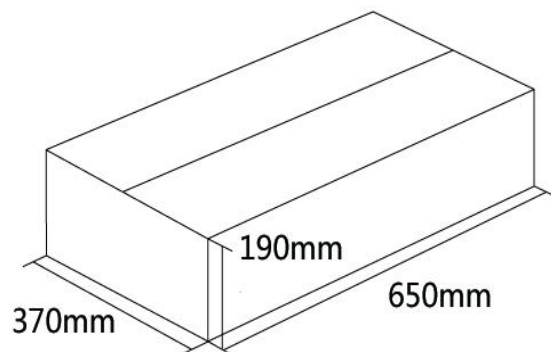
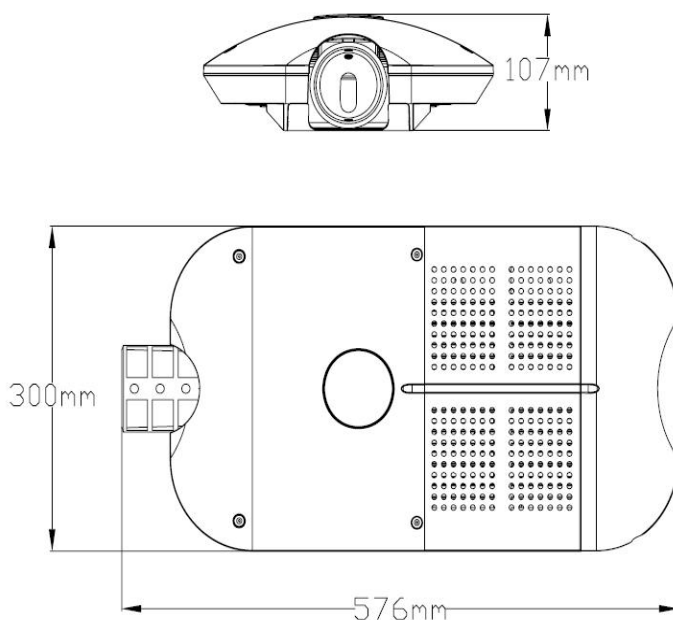
Model No.	USSL80WILAOK
Nominal Wattage	80W
Nominal Voltage	100-277/200-480VAC, 50/60Hz
	24VDC
Maximum Current	AC 0.9A (max)
	DC 0.3A (max)
Power Factor (PF)	>0.95
Driver Efficiency	>92%

### Photometric Specifications

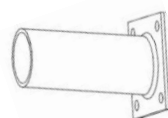
Luminous Flux	+Lumen tolerance +/- 5%
	8,000-8,800lm
CRI	Ra>70(80 Optional)
CCT	3000/4000/5000/5700/6500K
Optional Beam Angle	60*150° / 70*150° / 80*150° / 90*100° / 60° / 120°

### Mechanical Specifications

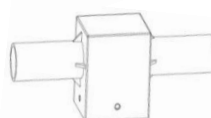
IP&IK Rating	IP66 & IK10
Lifetime	62000 hours - L70, @25°C
Heat Radiator	Anodized Aluminum
Lens	PC
Fixture Dimension	576*300*107mm
	22.7*11.8*4.2 inches
Net Weight	7.5kg
Carton Dimension	650*370*190mm
Gross Weight	8.3kg



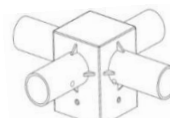
### Optional converters for different applications



60mm to wall mount converter



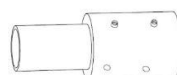
2 in 1 converter



4 in 1 converter



Round to square converter



80-60mm converter



wall mount converter



60-40mm converter



# USSL120WILAOK

LED Street & Parking Light, 240-280W HID Replacement



New



Photocell



Black / white / silver / bronze color housing optional  
1-10V / PWM / Resistance dimming optional

## Specifications

### Electrical Specifications

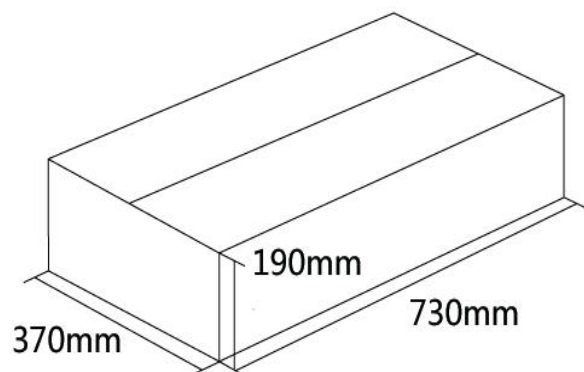
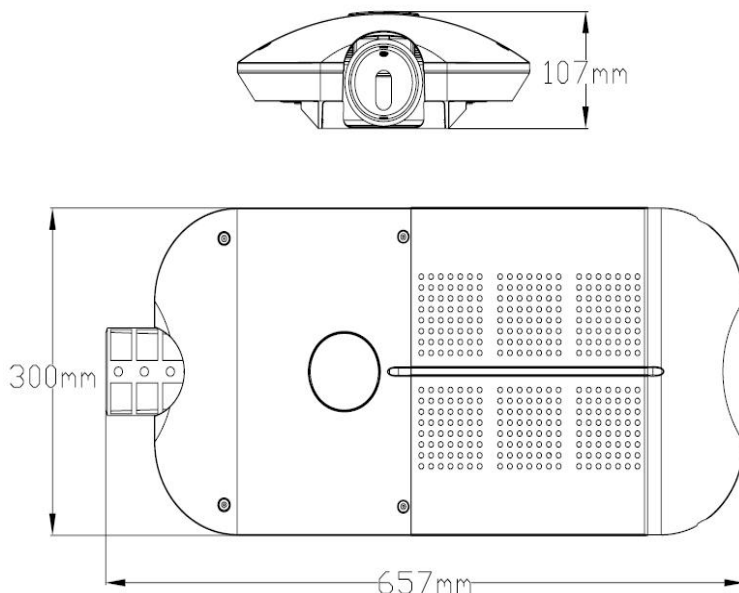
Model No.	USSL120WILAOK
Nominal Wattage	120W
Nominal Voltage	100-277VAC, 50/60Hz 200-480VAC, 50/60Hz
Maximum Current	AC 1.35A (max) DC 5A (max)
Power Factor (PF)	>0.95
Driver Efficiency	>93%

### Photometric Specifications

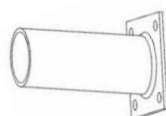
Luminous Flux	+Lumen tolerance +/- 5% 12,000-13,200lm
CRI	Ra>70(80 Optional)
CCT	3000-6500K
Optional Beam Angle	60°*150° / 70°*150° / 80°*150° / 90°*100° / 60° / 120°

### Mechanical Specifications

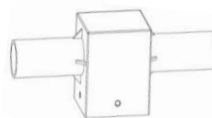
IP&IK Rating	IP66 & IK10
Lifetime	62000 hours - L70, @25°C
Heat Radiator	Anodized Aluminum
Lens	PC
Fixture Dimension	657*300*107mm 25.9*11.8*4.2 inches
Net Weight	8.4kg
Carton Dimension	730*370*190mm
Gross Weight	9.5kg



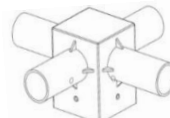
### Optional converters for different applications



60mm to wall mount converter



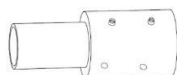
2 in 1 converter



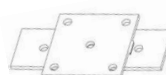
4 in 1 converter



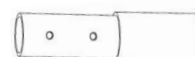
Round to square converter



80-60mm converter



wall mount converter



60-40mm converter

# USSL160WILAOK

LED Street & Parking Light, 320-400W HID Replacement



New



Photocell



Black / white / silver / bronze color housing optional  
1-10V / PWM / Resistance dimming optional

## Specifications

### Electrical Specifications

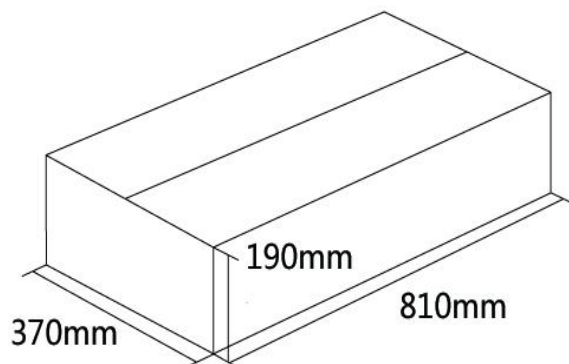
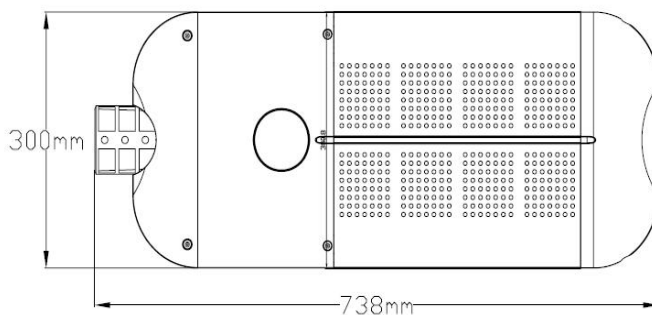
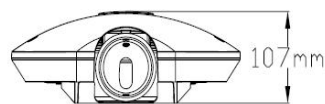
Model No.	USSL160WILAOK
Nominal Wattage	160W
Nominal Voltage	100-277VAC, 50/60Hz 200-480VAC, 50/60Hz
Maximum Current	AC 1.80A (max)
Power Factor (PF)	>0.95
Driver Efficiency	>93%

### Photometric Specifications

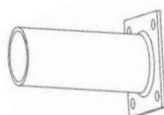
Luminous Flux	+Lumen tolerance +/- 5% 16,000-17,600lm
CRI	Ra>70(80 Optional)
CCT	3000/4000/5000/5700/6500K
Optional Beam Angle	60°*150° / 70°*150° / 80°*150° / 90°*100° / 60° / 120°

### Mechanical Specifications

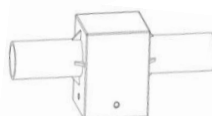
IP&IK Rating	IP66 & IK10
Lifetime	62000 hours - L70, @25°C
Heat Radiator	Anodized Aluminum
Lens	PC
Fixture Dimension	738*300*107mm 29.1*11.8*4.2 inches
Net Weight	9.7kg
Carton Dimension	810*370*190mm
Gross Weight	10.6kg



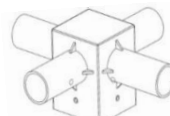
### Optional converters for different applications



60mm to wall mount converter



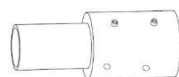
2 in 1 converter



4 in 1 converter



Round to square converter



80-60mm converter



wall mount converter



60-40mm converter

# USSL200WILAOK

LED Street & Parking Light, 400-500W HID Replacement



New



Photocell



Black / white / silver / bronze color housing optional  
1-10V / PWM / Resistance dimming optional

## Specifications

### Electrical Specifications

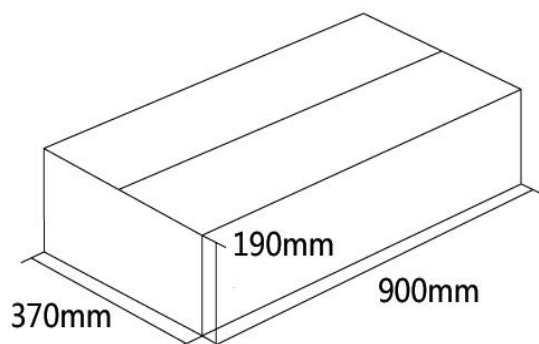
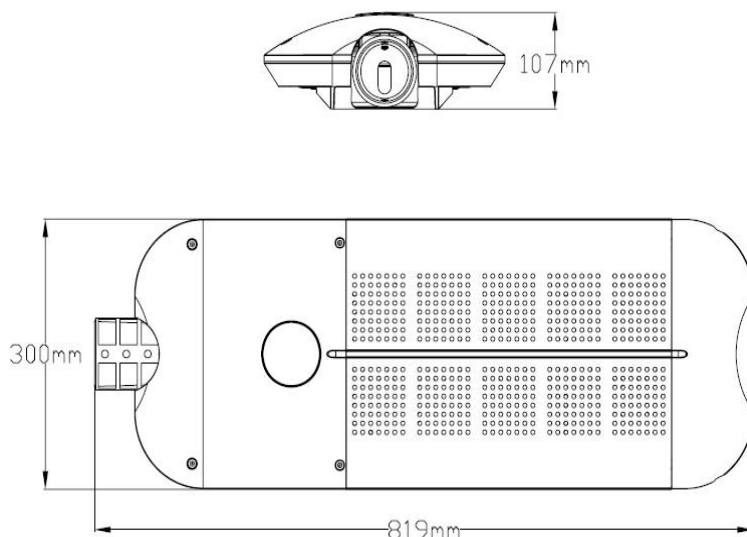
Model No.	USSL200WILAOK
Nominal Wattage	200W
Nominal Voltage	100-277VAC, 50/60Hz 200-480VAC, 50/60Hz
Maximum Current	AC 2.25A (max)
Power Factor (PF)	>0.95
Driver Efficiency	>93%

### Photometric Specifications

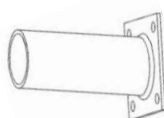
Luminous Flux	+Lumen tolerance +/- 5% 20,000-22,000lm
CRI	Ra>70(80 Optional)
CCT	3000-6500K
Optional Beam Angle	60°*150° / 70°*150° / 80°*150° / 90°*100° / 60° / 120°

### Mechanical Specifications

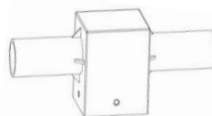
IP&IK Rating	IP66 & IK10
Lifetime	62000 hours - L70, @25°C
Heat Radiator	Anodized Aluminum
Lens	PC
Fixture Dimension	819*300*107mm 32.3*11.8*4.2 inches
Net Weight	10.8kg
Carton Dimension	900*370*190mm
Gross Weight	12kg



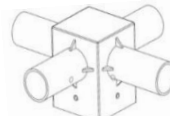
### Optional converters for different applications



60mm to wall mount converter



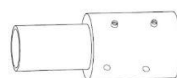
2 in 1 converter



4 in 1 converter



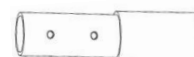
Round to square converter



80-60mm converter



wall mount converter



60-40mm converter

# USSL240WILAOK

LED Street & Parking Light, 480-600W HID Replacement



New



Photocell



Black / white / silver / bronze color housing optional  
1-10V / PWM / Resistance dimming optional

## Specifications

### Electrical Specifications

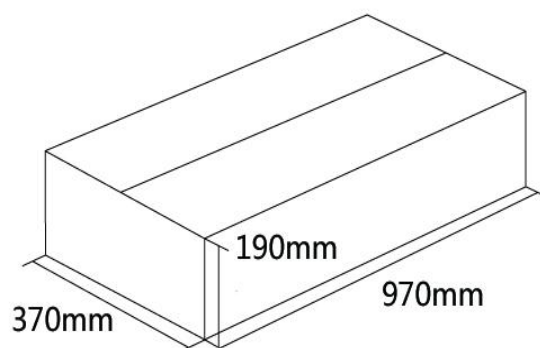
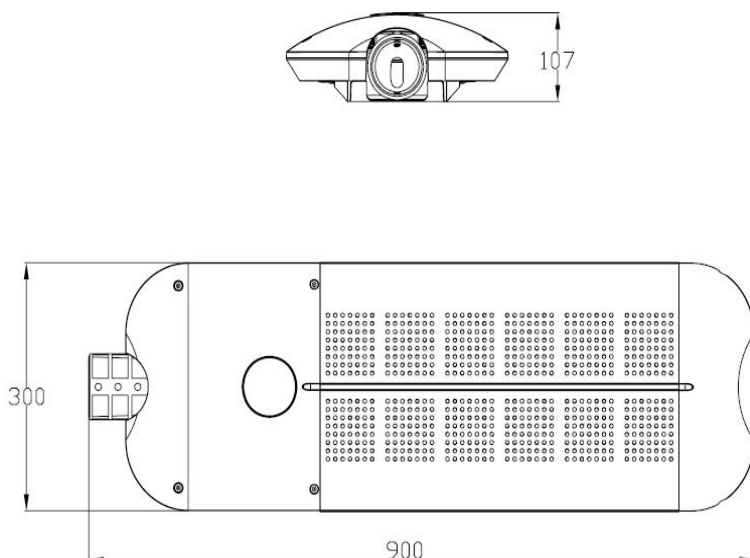
Model No.	USSL240WILAOK
Nominal Wattage	240W
Nominal Voltage	100-277VAC, 50/60Hz 200-480VAC, 50/60Hz
Maximum Current	AC 2.66A (max)
Power Factor (PF)	>0.95
Driver Efficiency	>94%

### Photometric Specifications

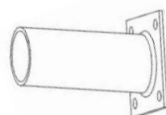
Luminous Flux	+Lumen tolerance +/- 5% 24,000-26,400lm
CRI	Ra>70(80 Optional)
CCT	3000/4000/5000/5700/6500K
Optional Beam Angle	60°*150° / 70°*150° / 80°*150° / 90°*100° / 60° / 120°

### Mechanical Specifications

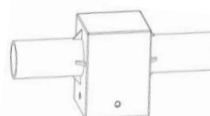
IP&IK Rating	IP66 & IK10
Lifetime	62000 hours - L70, @25°C
Heat Radiator	Anodized Aluminum
Lens	PC
Fixture Dimension	900*300*107mm 35.4*11.8*4.2 inches
Net Weight	11.6kg
Carton Dimension	970*370*190mm
Gross Weight	13.1kg



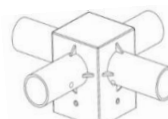
### Optional converters for different applications



60mm to wall mount converter



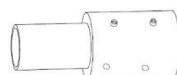
2 in 1 converter



4 in 1 converter



Round to square converter



80-60mm converter



wall mount converter



60-40mm converter



# USSL280WILAOK

LED Street & Parking Light, 800-1000W HID Replacement



New



Photocell



Black / white / silver / bronze color housing optional  
1-10V / PWM / Resistance dimming optional

## Specifications

### Electrical Specifications

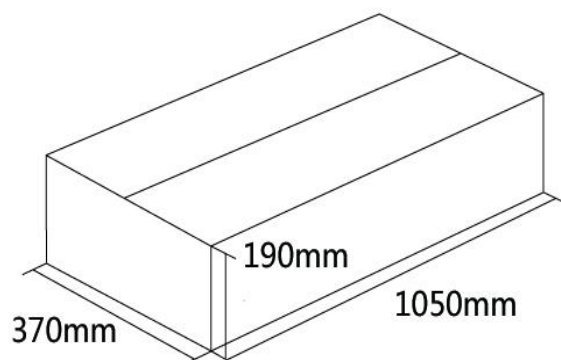
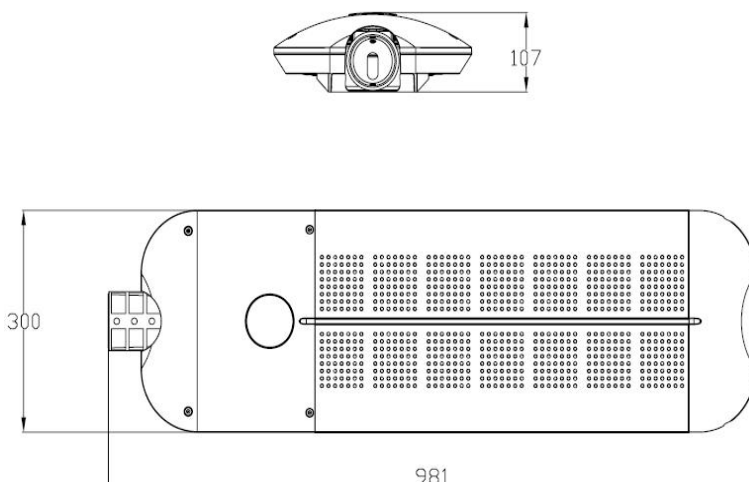
Model No.	USSL280WILAOK
Nominal Wattage	280W
Nominal Voltage	100-277VAC, 50/60Hz
Maximum Current	AC 3.10A (max)
Power Factor (PF)	>0.95
Driver Efficiency	>94%

### Photometric Specifications

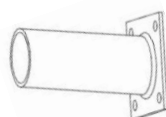
Luminous Flux	+Lumen tolerance +/- 5%
	28,000-30,800lm
CRI	Ra>70(80 Optional)
CCT	3000/4000/5000/5700/6500K
Optional Beam Angle	60*150° / 70*150° / 80*150° / 90*100° / 60° / 120°

### Mechanical Specifications

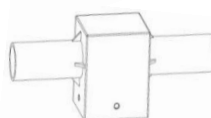
IP&IK Rating	IP66 & IK10
Lifetime	62000 hours - L70, @25°C
Heat Radiator	Anodized Aluminum
Lens	PC
Fixture Dimension	981*300*107mm 38.6*11.8*4.2 inches
Net Weight	13.5kg
Carton Dimension	1050*370*190mm
Gross Weight	15.4kg



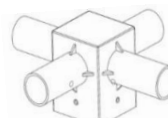
### Optional converters for different applications



60mm to wall mount converter



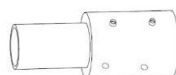
2 in 1 converter



4 in 1 converter



Round to square converter



80-60mm converter



wall mount converter



60-40mm converter